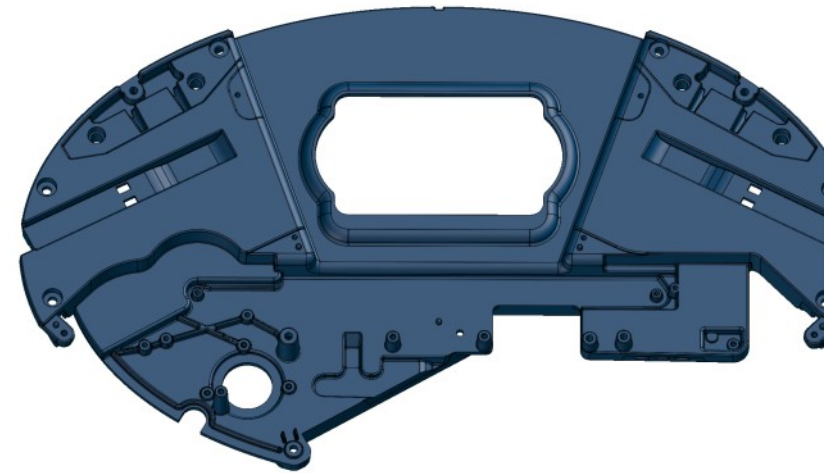


Report

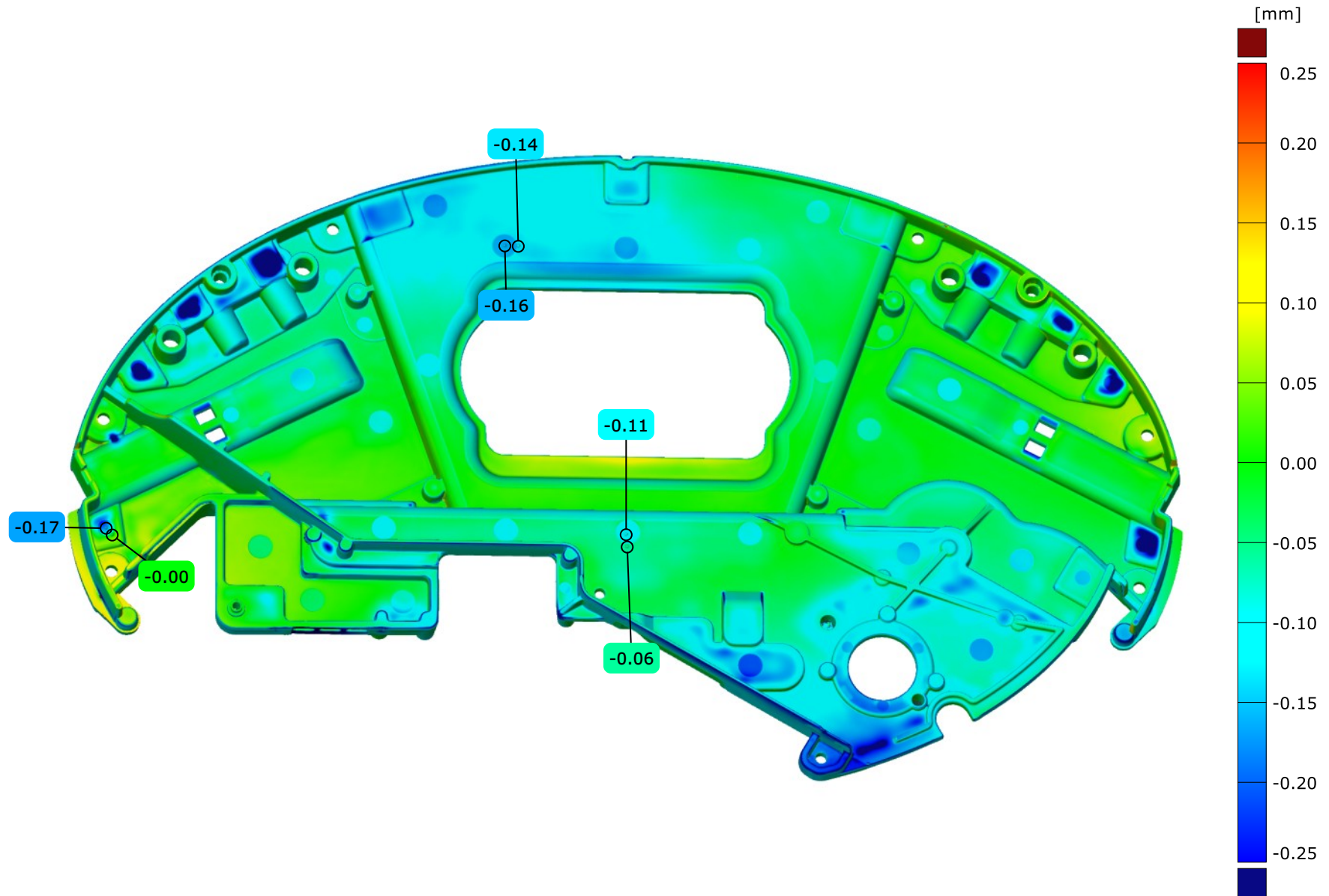


Company:	GOM GmbH
Inspector:	Trainer
Email:	Unknown keyword
Application name:	ZEISS INSPECT
Application version:	2025-0
System:	- / -
Measuring volume:	Unknown keyword
Part temperature:	Unknown keyword
Project:	Expert Course: Injection Molding
Part name:	Multimedia part
Part number:	- / -
CAD file:	Multimedia part
Datum:	04.04.2019
Note:	Unknown keyword



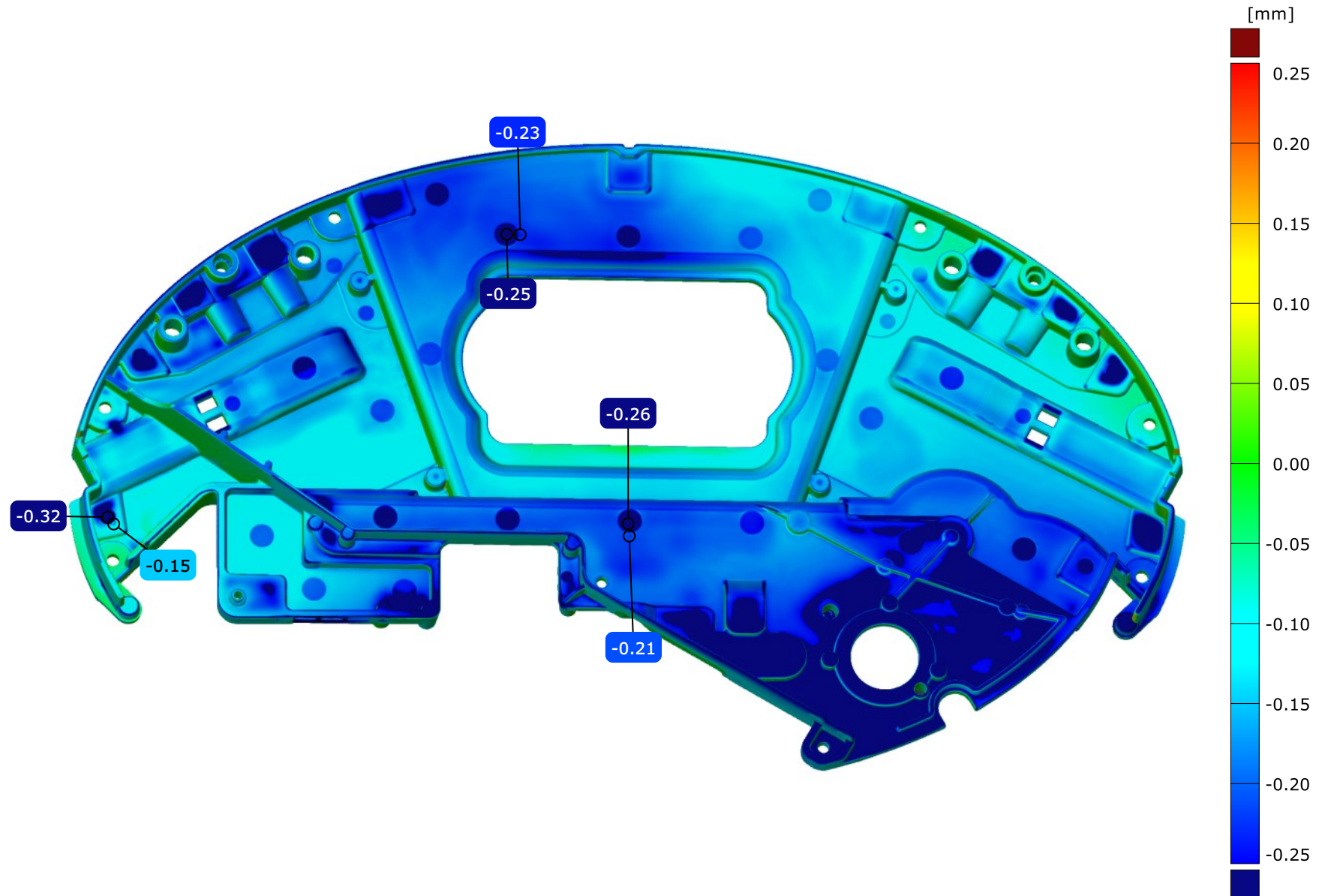
Ejector pin marks in prealignment

Alignment: Prealignment_MMP



Ejector pin marks in mounting condition

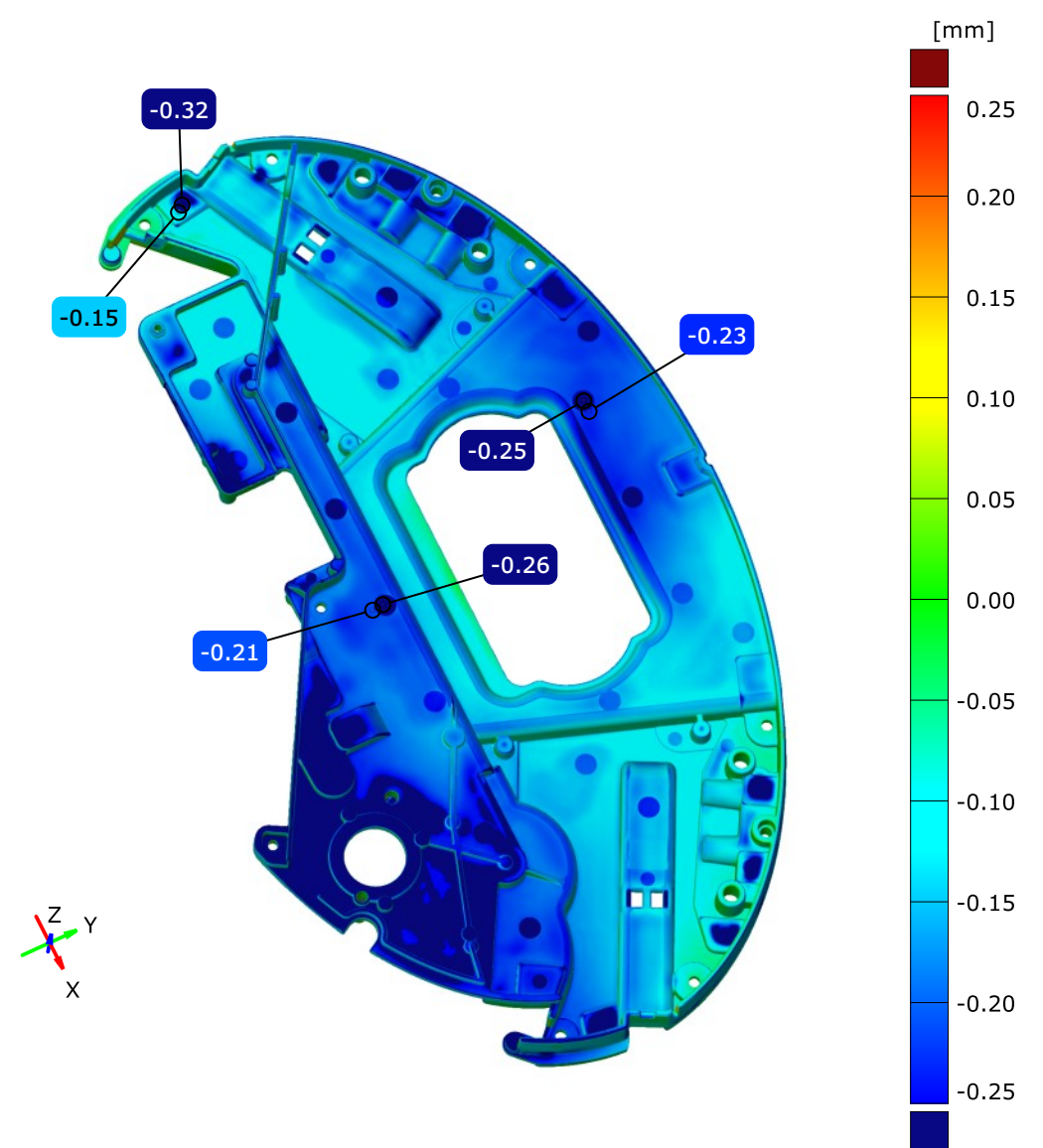
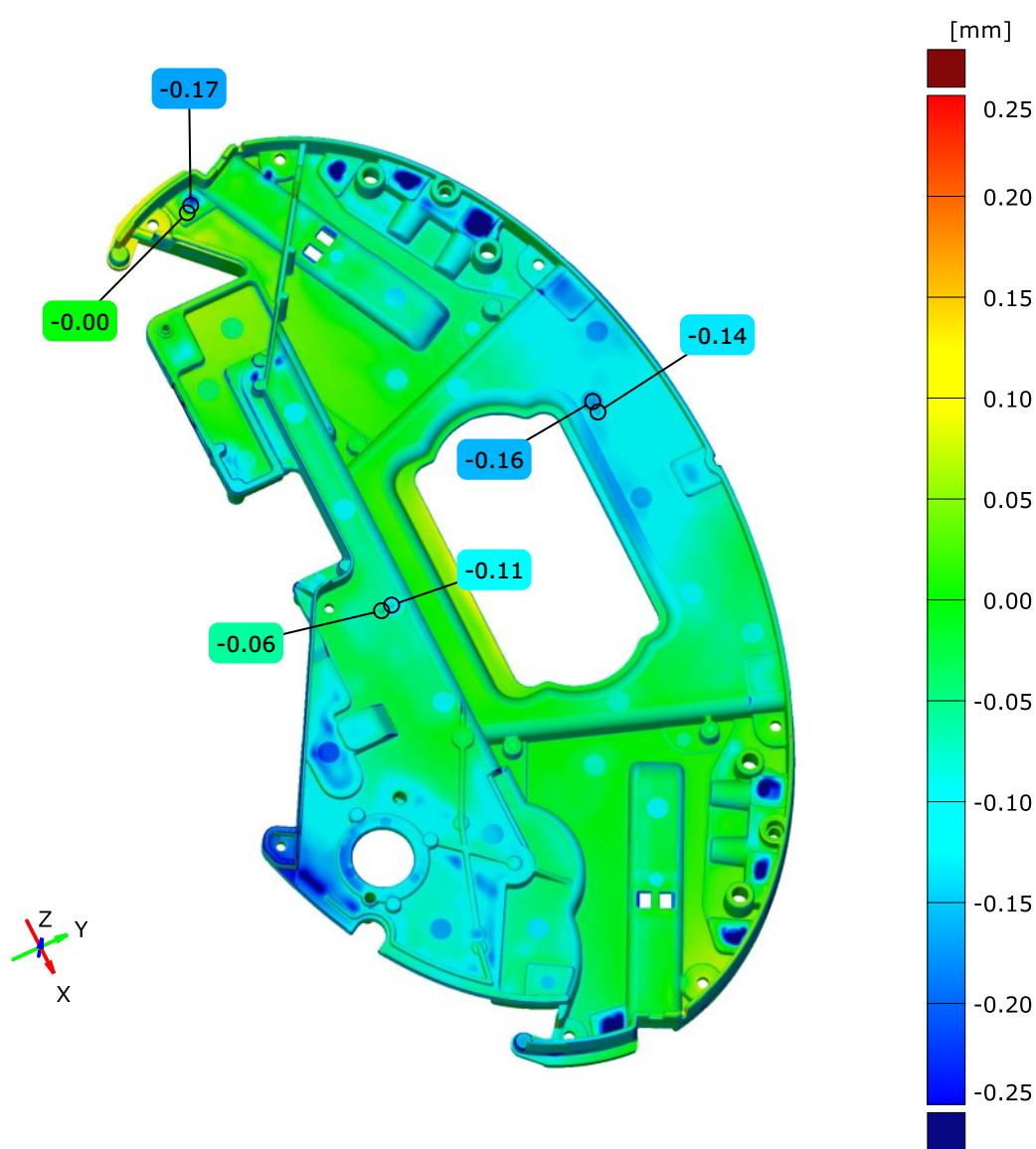
Alignment: Alignment by coordinate systems -



Comparison of Ejector pin marks results depending on a

Alignment: Prealignment_MMP

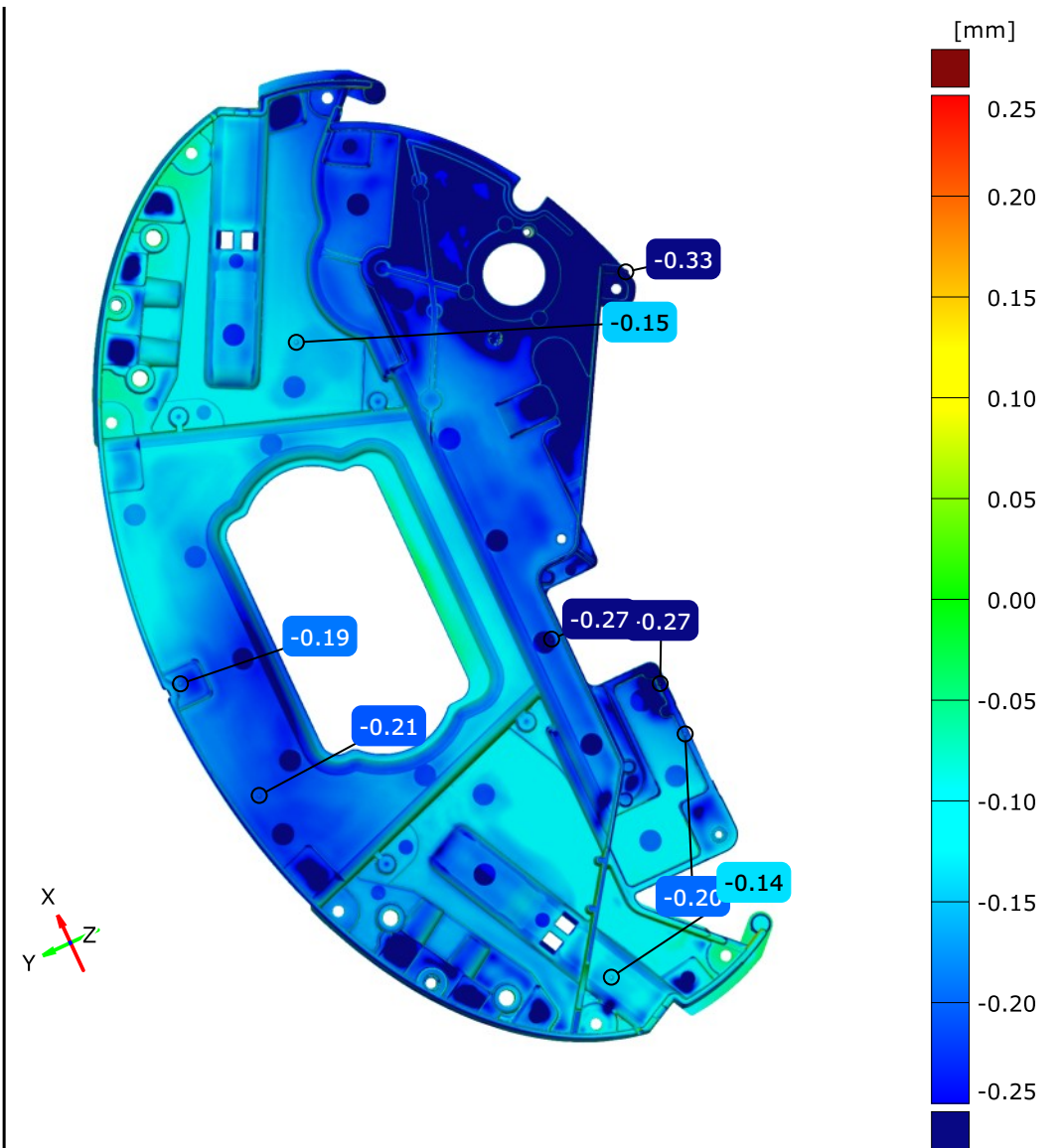
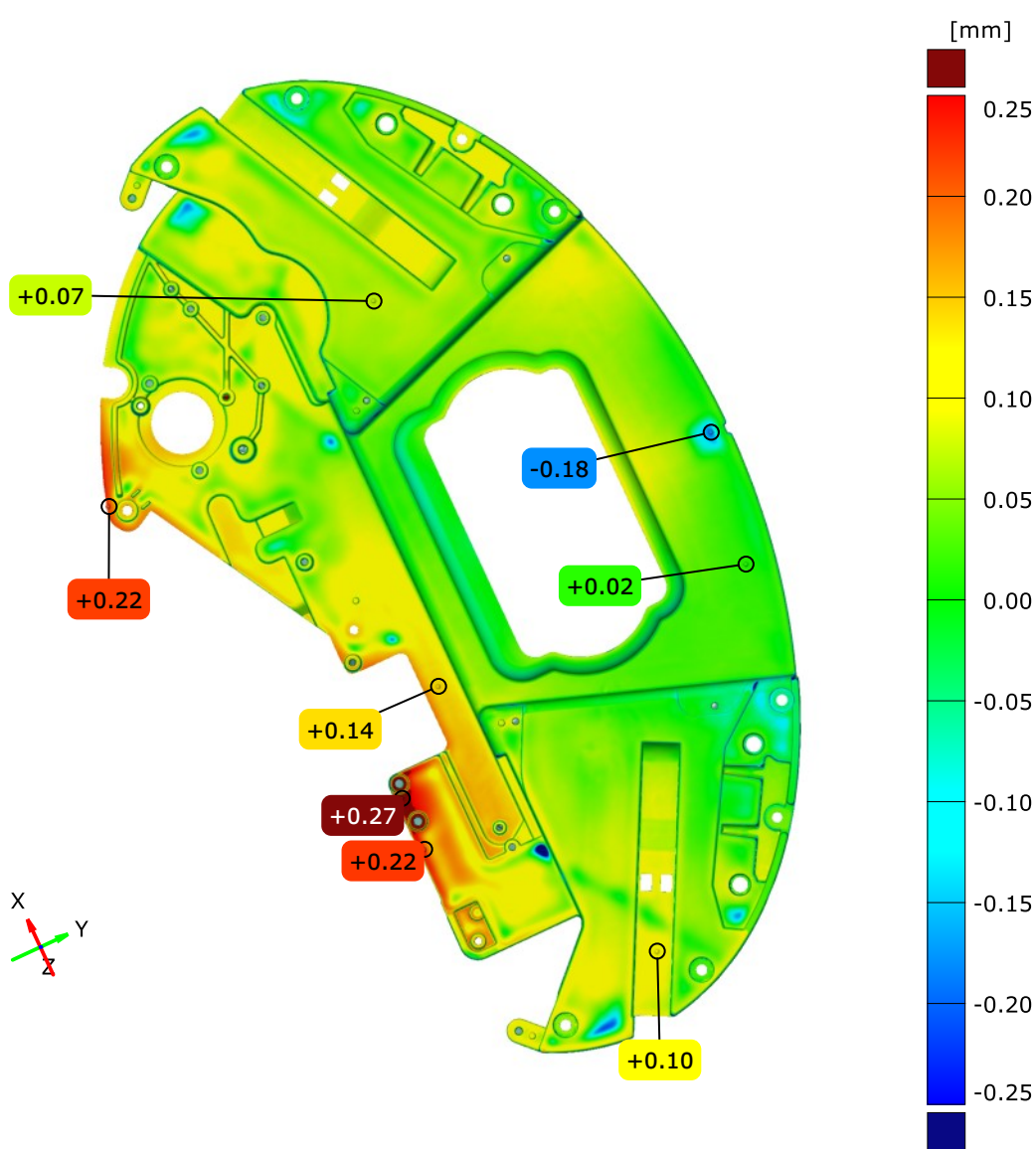
Alignment: Alignment by coordinate systems - Mounting Condition MMP



Warpage and shrinkage

Alignment: Alignment by coordinate systems - Mounting Condition MMP

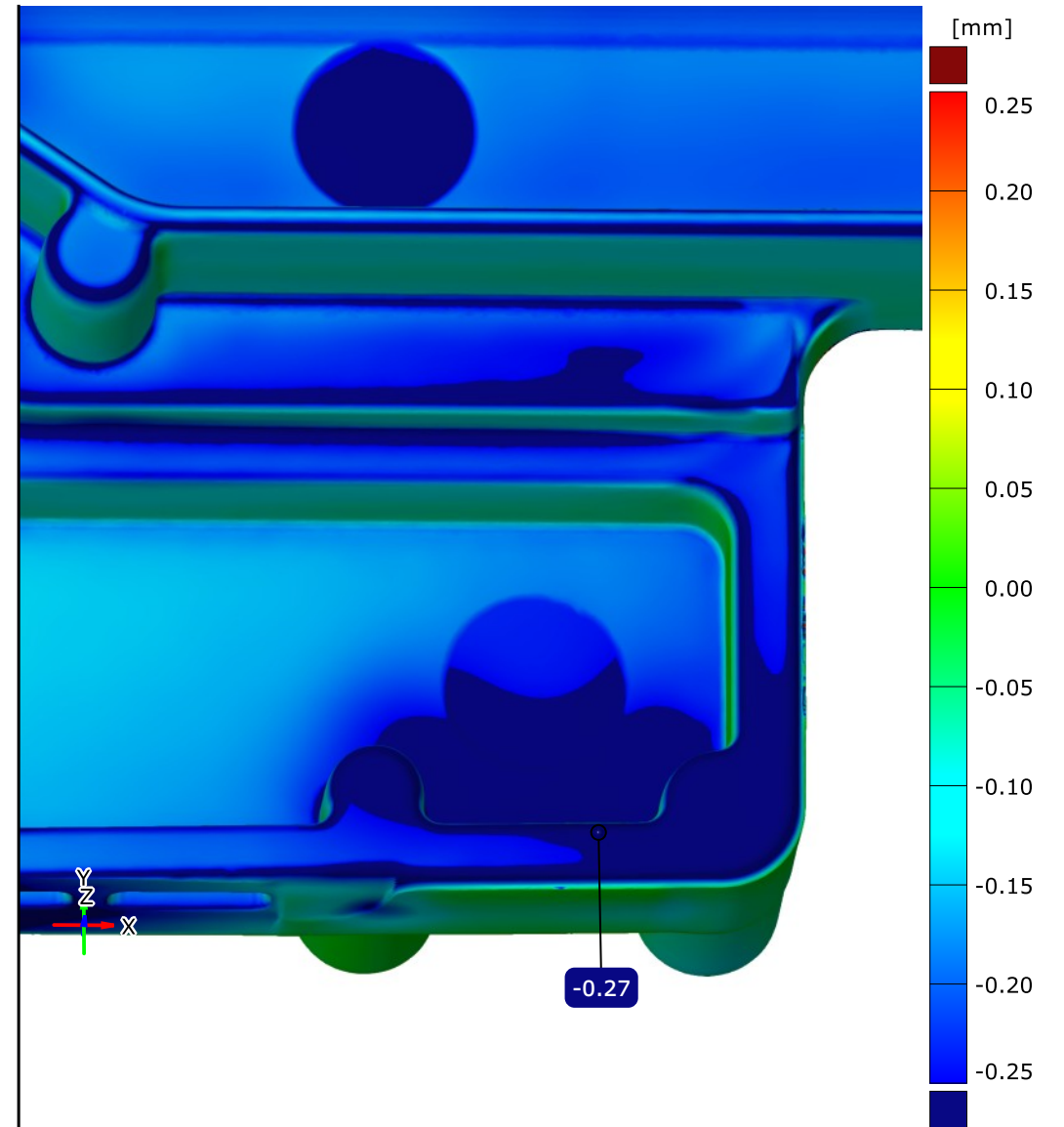
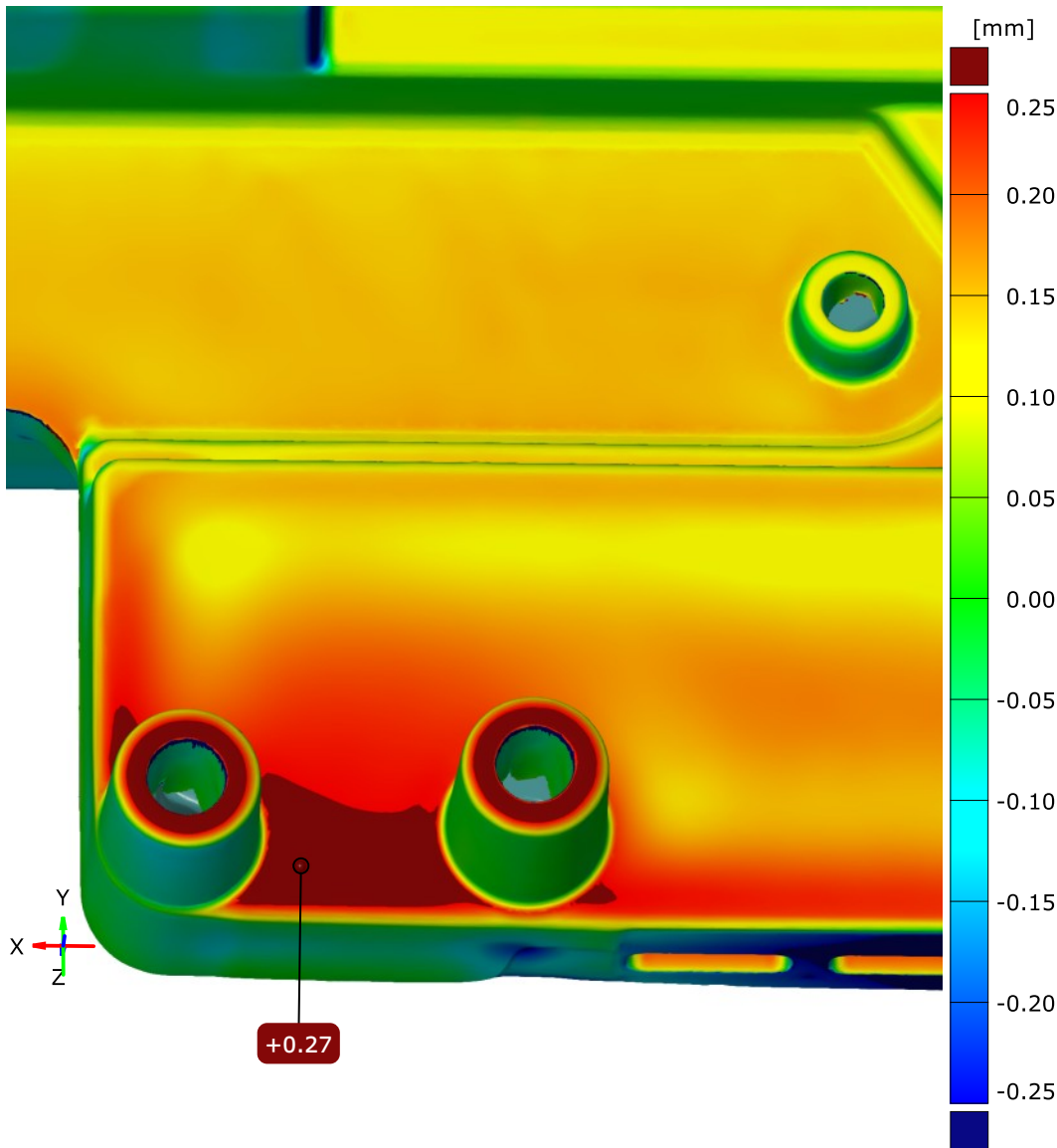
Alignment: Alignment by coordinate systems - Mounting Condition MMP



Warpage

Alignment: Alignment by coordinate systems - Mounting Condition MMP

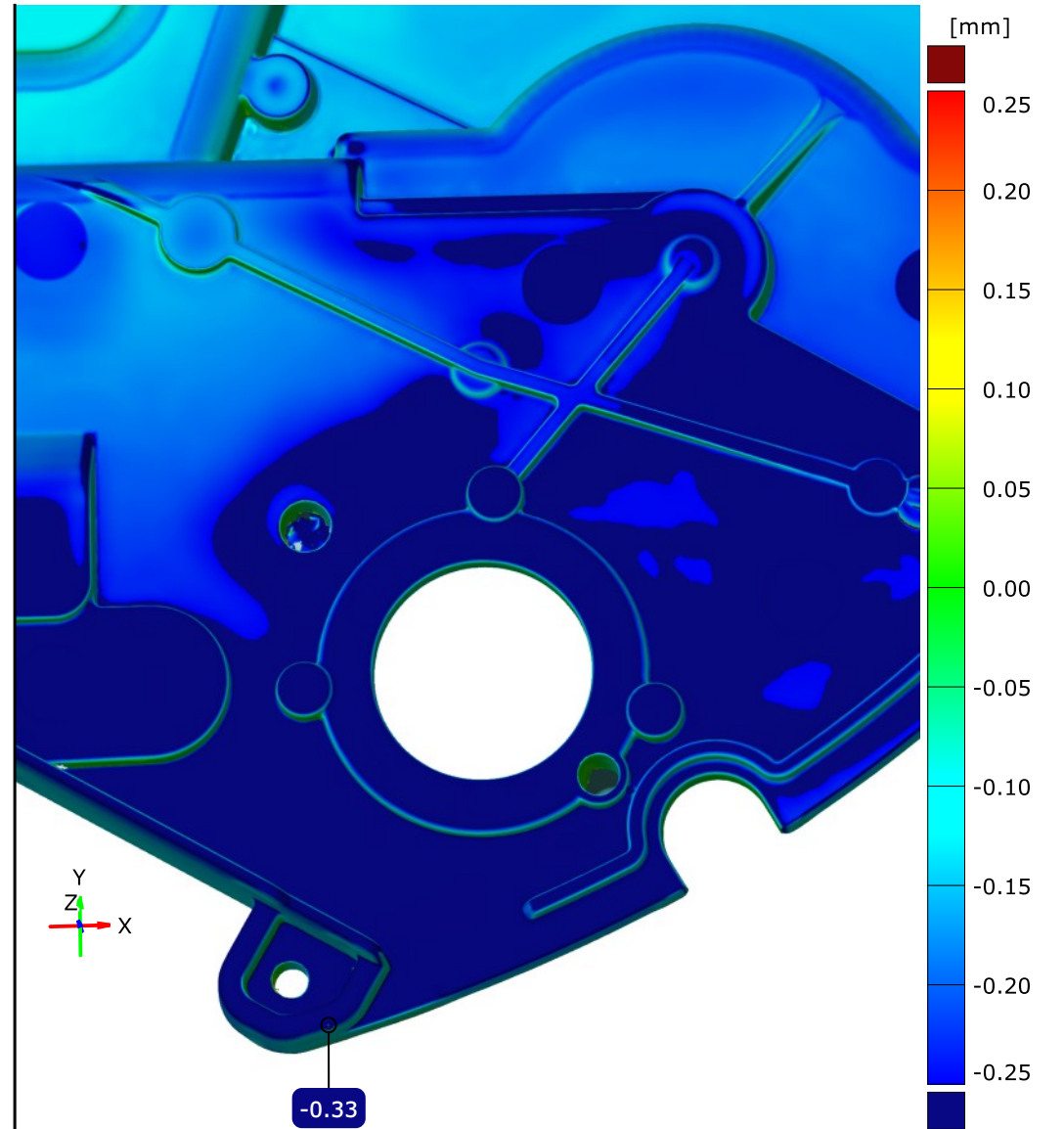
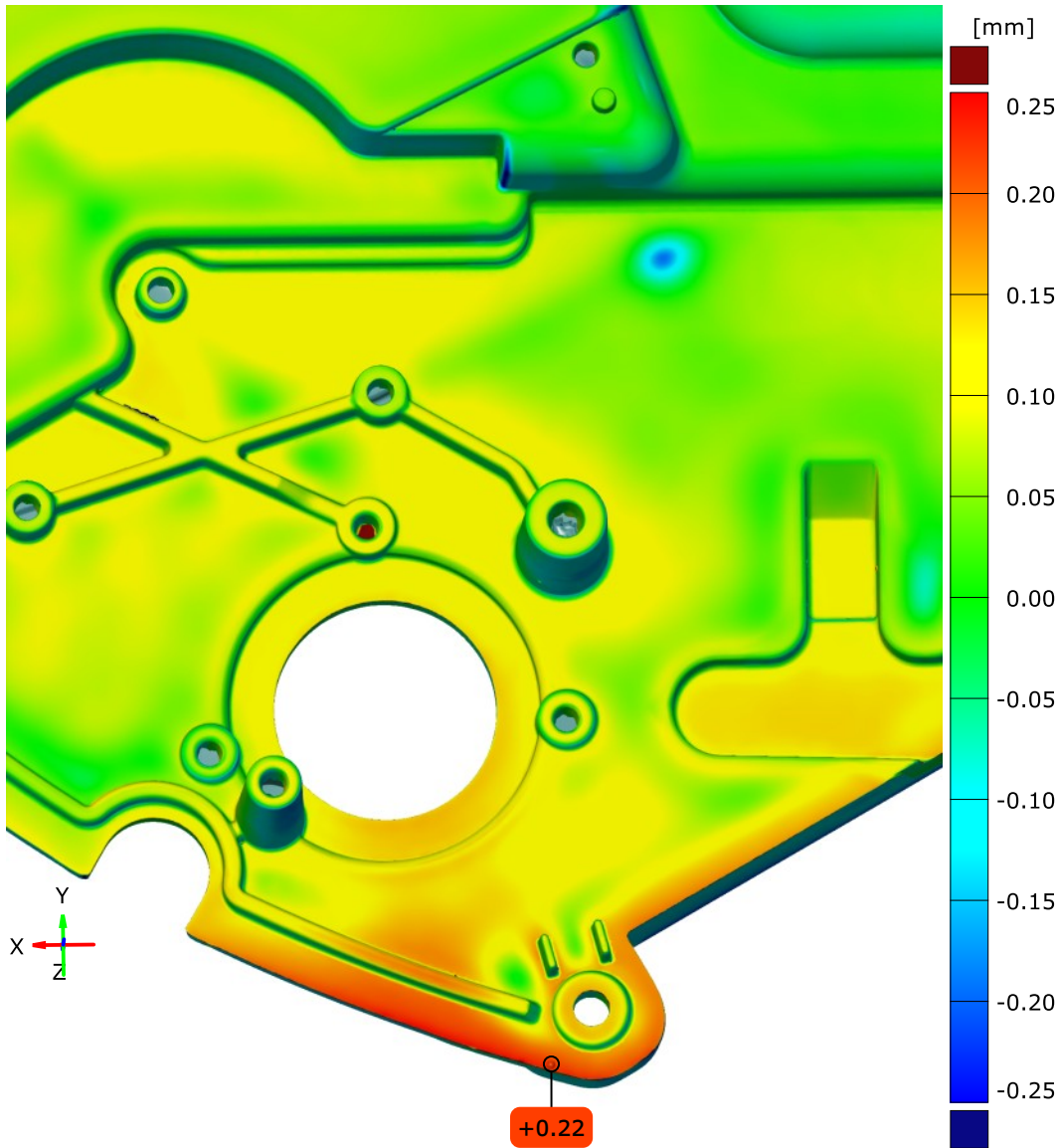
Alignment: Alignment by coordinate systems - Mounting Condition MMP



Warpage and shrinkage

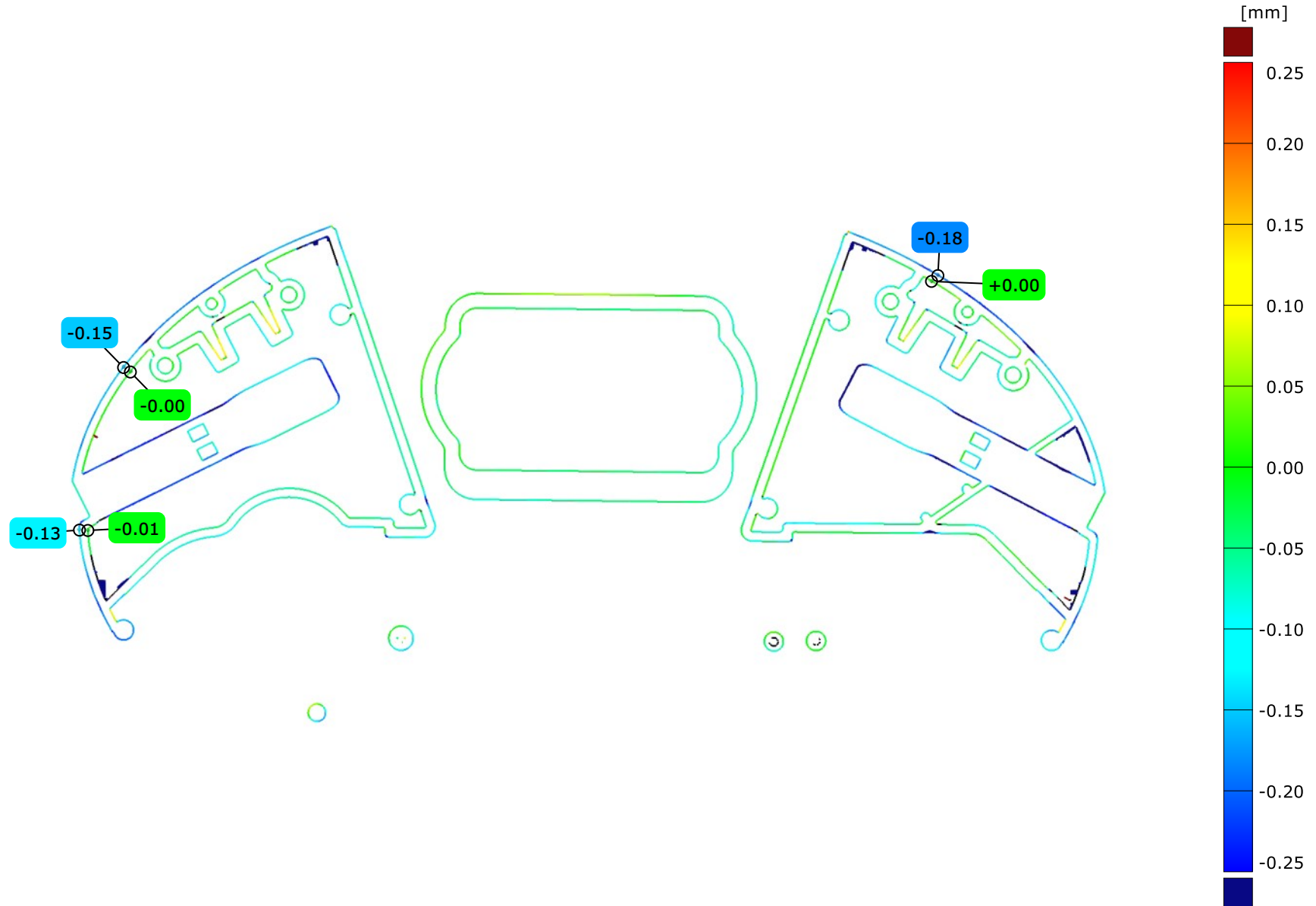
Alignment: Alignment by coordinate systems - Mounting Condition MMP

Alignment: Alignment by coordinate systems - Mounting Condition MMP



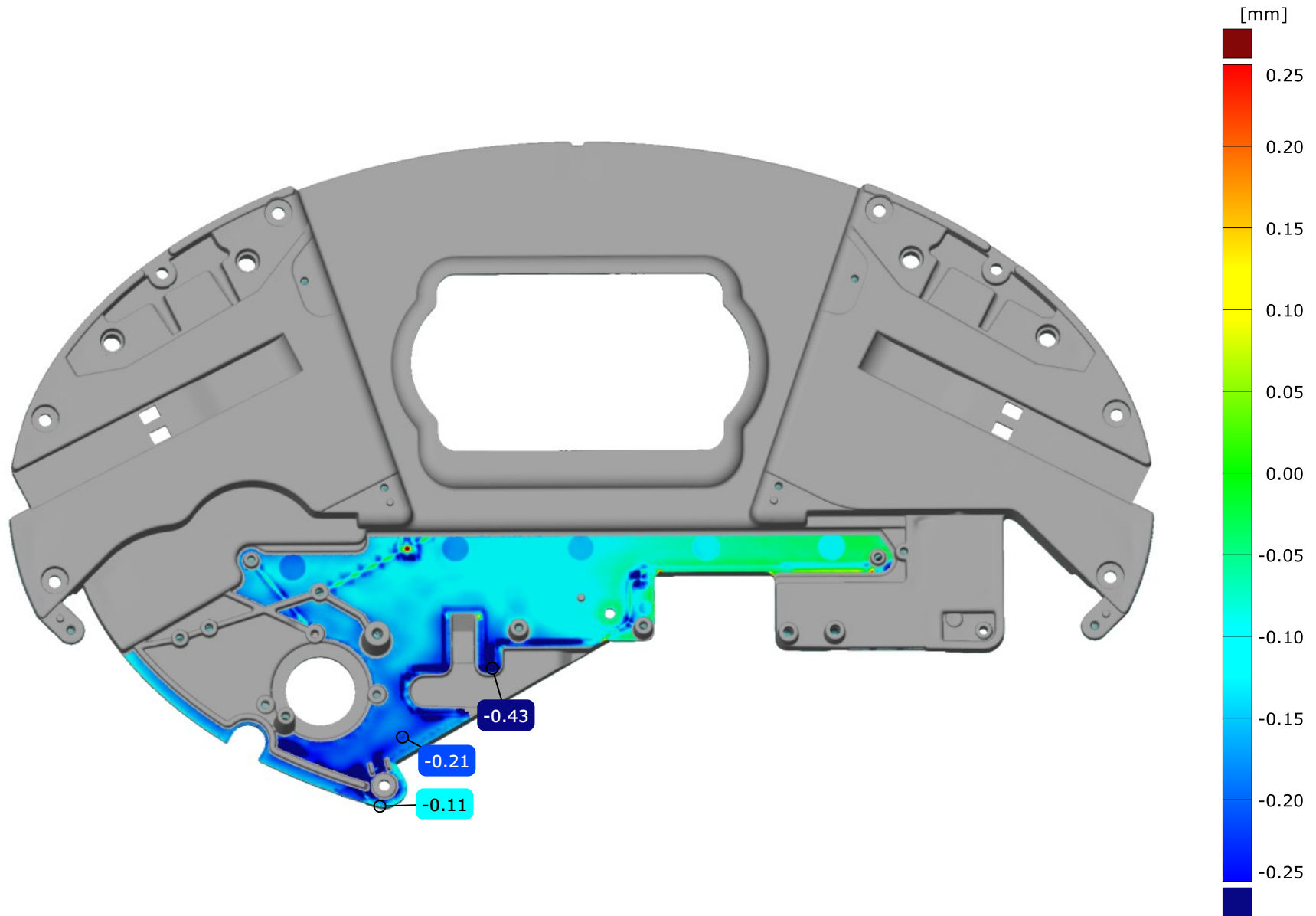
Inspection Section On Actual as an alternative to identif

Alignment: Alignment by coordinate systems -



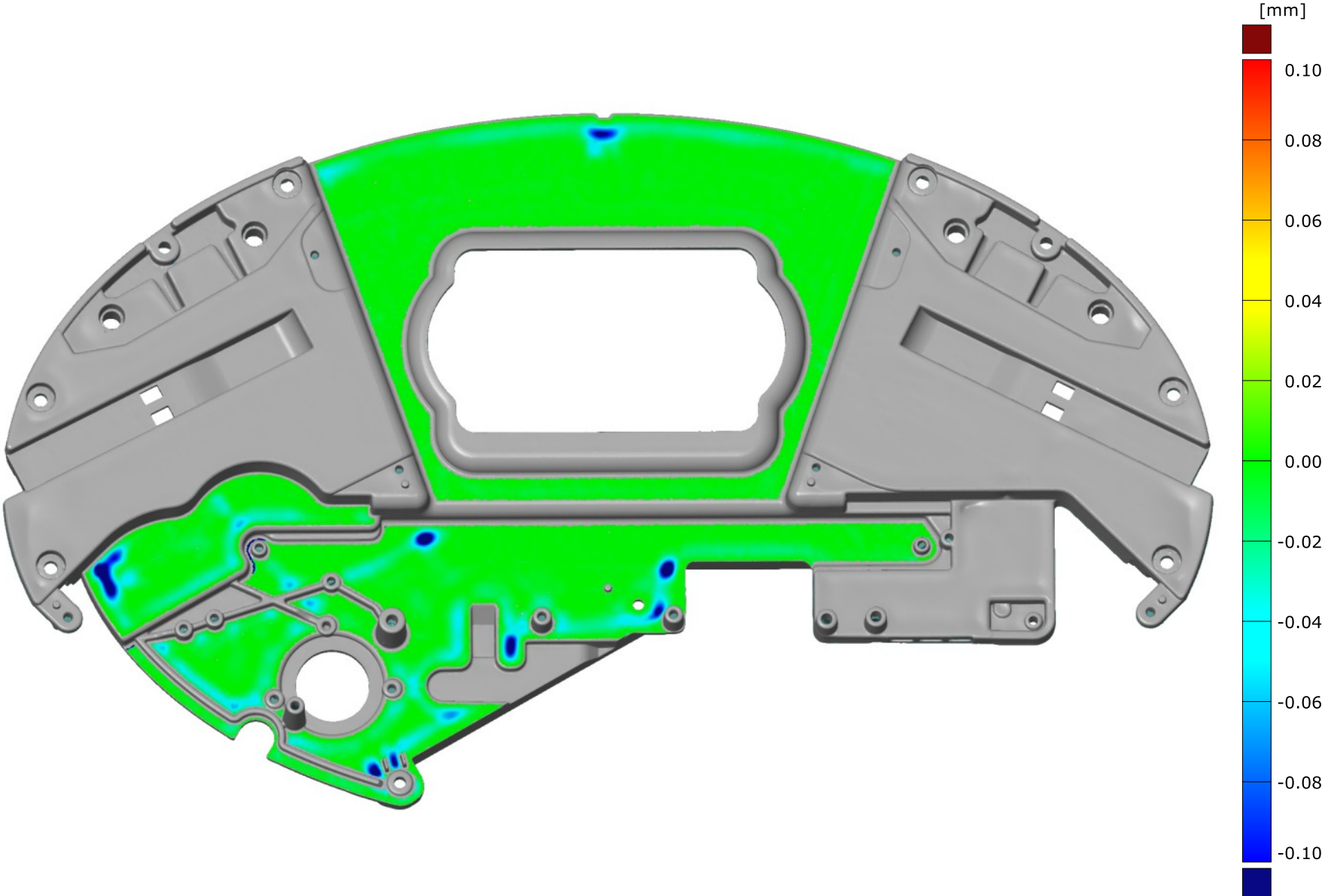
Material thickness comparison used to identify shrinkag

Alignment: Alignment by coordinate systems -



Surface defect map in X+ and Y+ direction

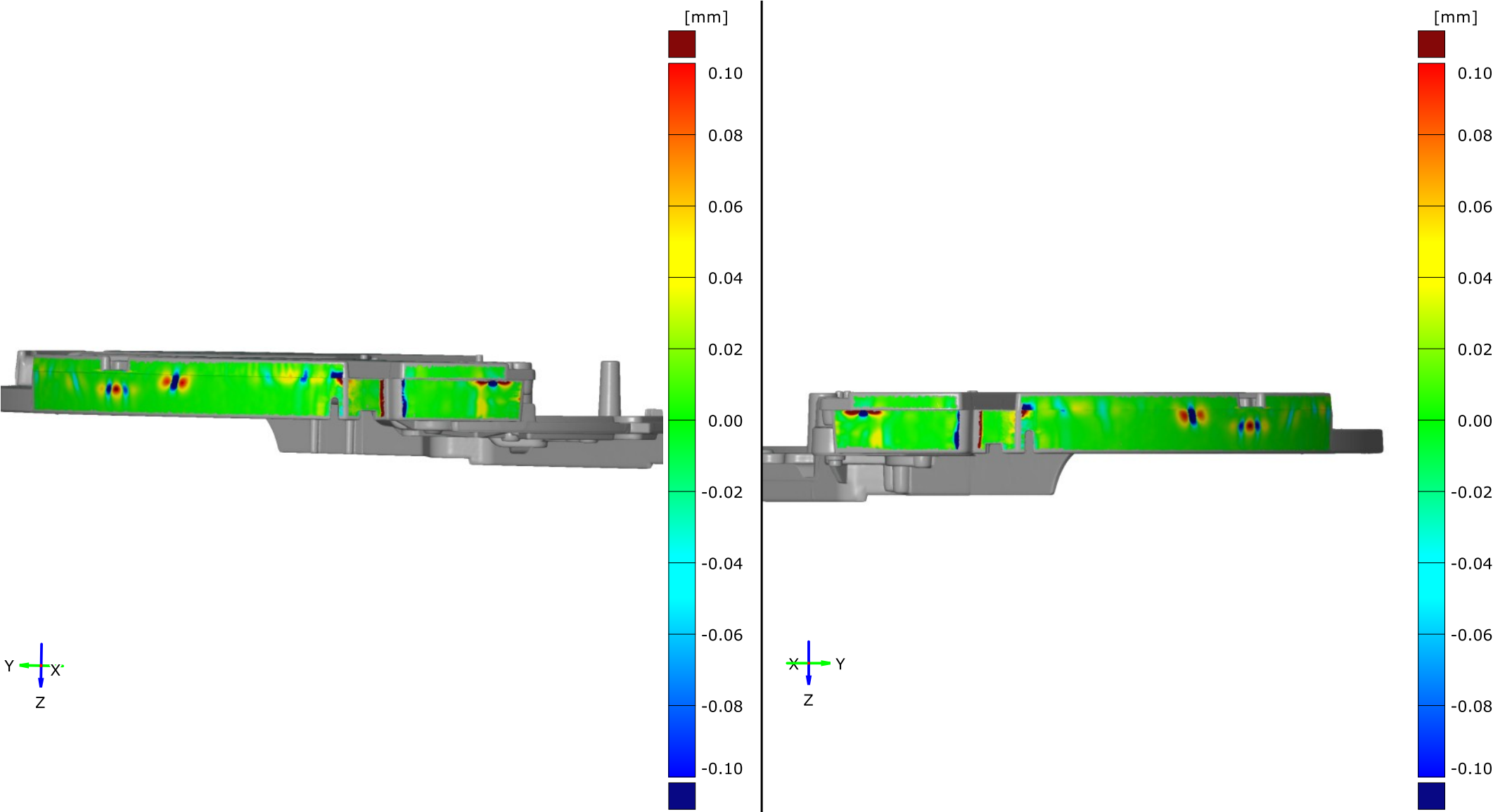
Alignment: Alignment by coordinate systems -



Surface Defect comparison at the edge

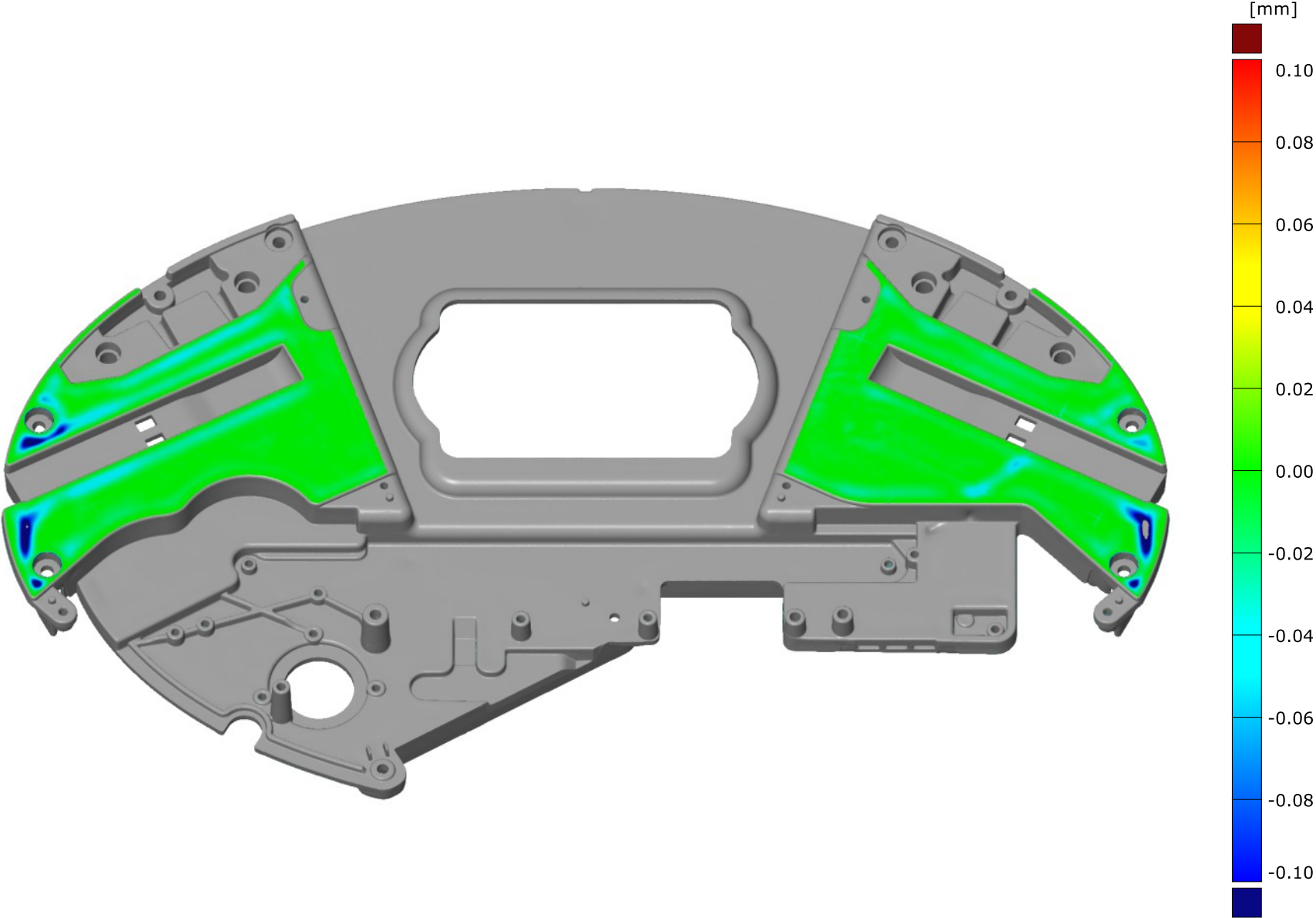
Alignment: Alignment by coordinate systems - Mounting Condition MMP

Alignment: Alignment by coordinate systems - Mounting Condition MMP



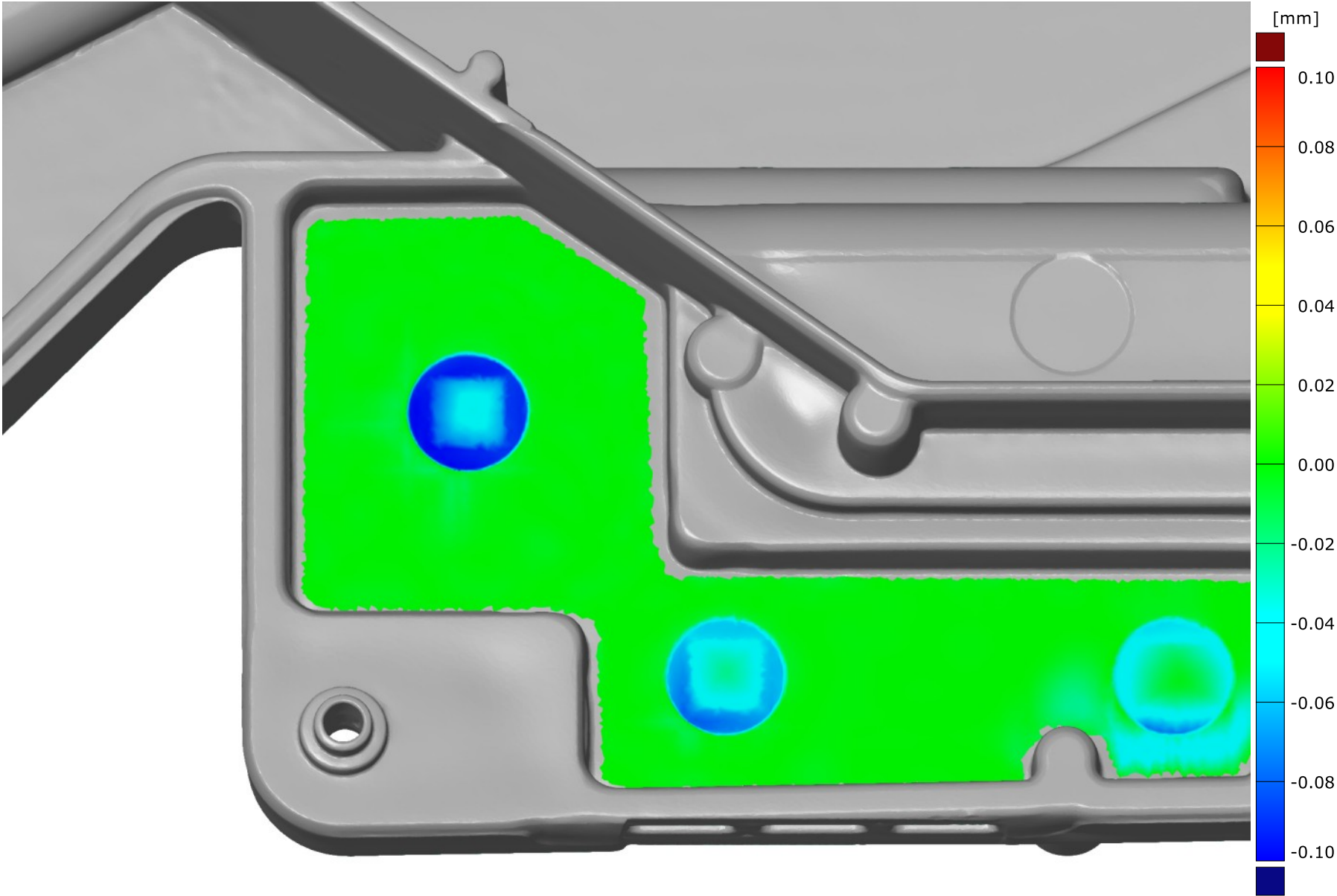
Surface defects of the left and right cover

Alignment: Alignment by coordinate systems -



Surface defects circuit board socket front

Alignment: Alignment by coordinate systems -

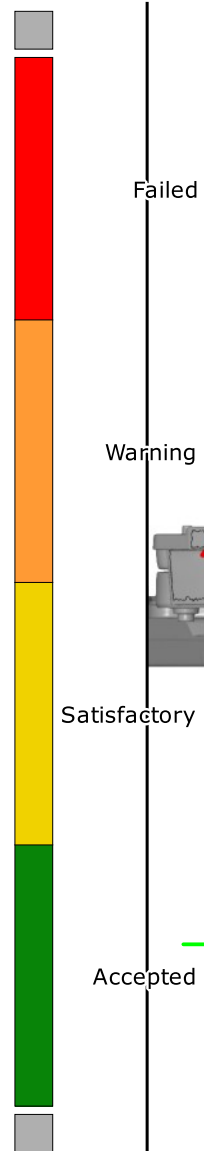
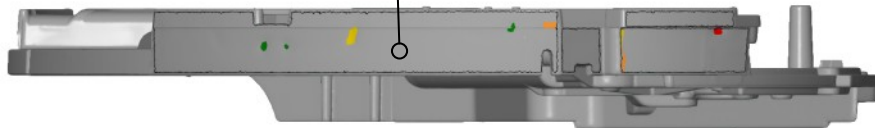


Surface defect classifications at the left and right edge

Alignment: Alignment by coordinate systems - Mounting Condition MMP

Alignment: Alignment by coordinate systems - Mounting Condition MMP

Surface defects MMP left edge.sdv.sink marks	
	Amount
Accepted	6
Satisfactory	2
Warning	3
Failed	1
Total	12



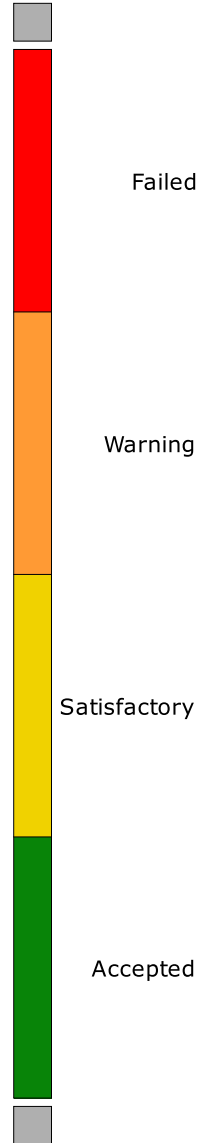
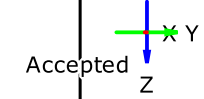
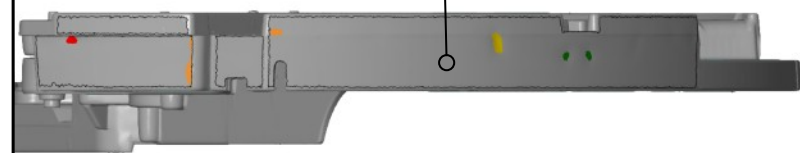
Satisfactory

Accepted

Failed

Warning

Surface defects MMP right edge.sdv.sink marks	
	Amount
Accepted	6
Satisfactory	1
Warning	2
Failed	1
Total	10



Satisfactory

Accepted

Failed

Warning

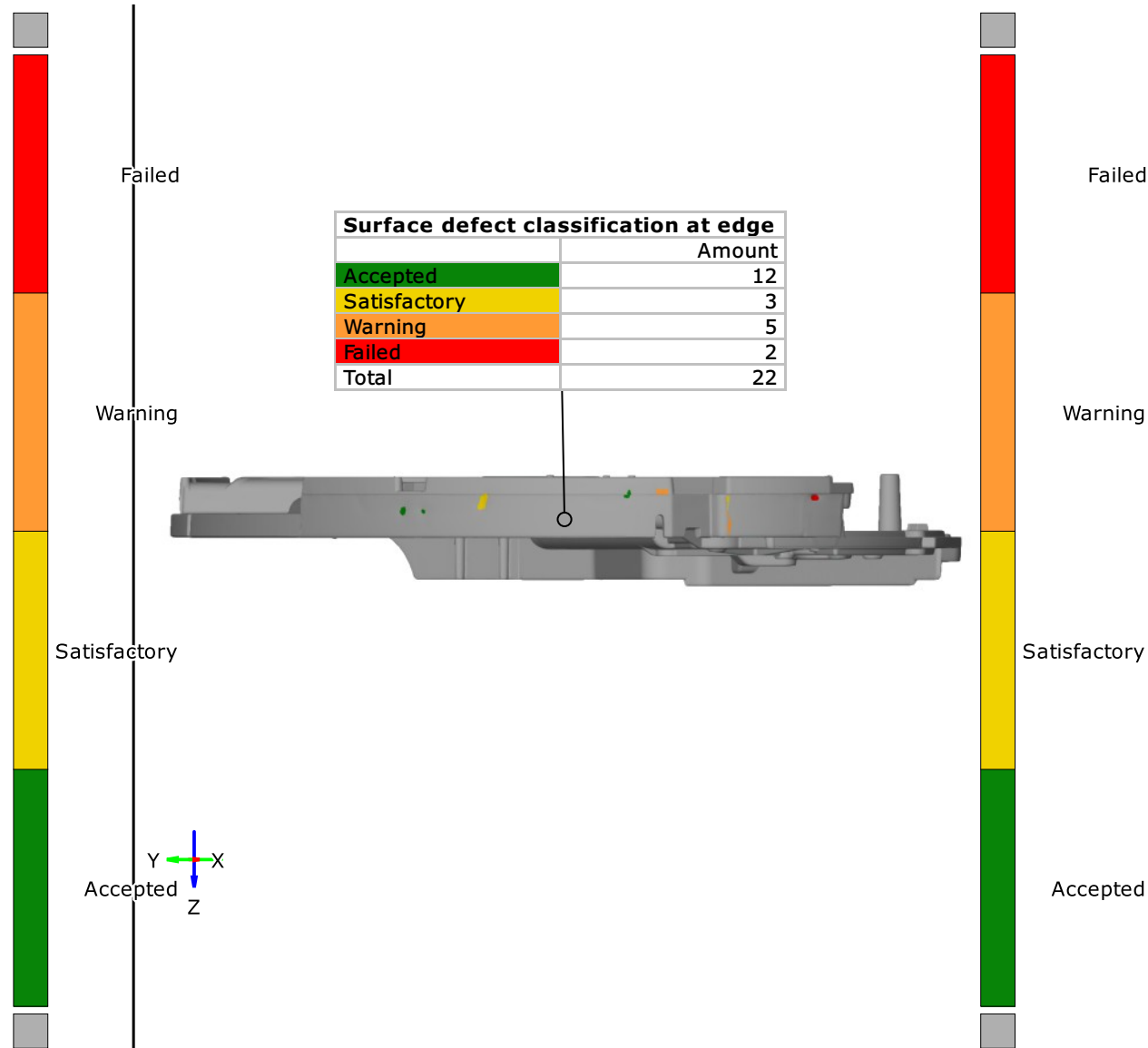
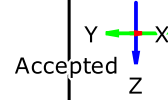
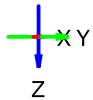
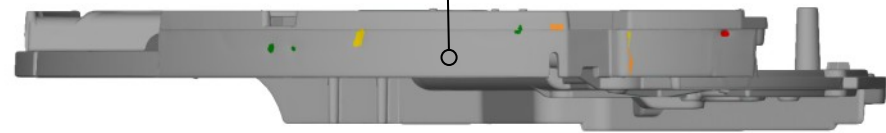
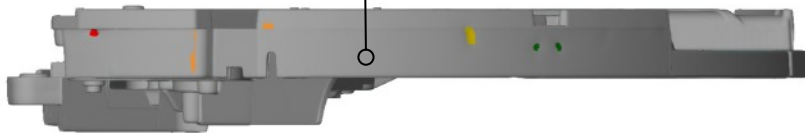
Surface defect classification at edge

Alignment: Alignment by coordinate systems - Mounting Condition MMP

Alignment: Alignment by coordinate systems - Mounting Condition MMP

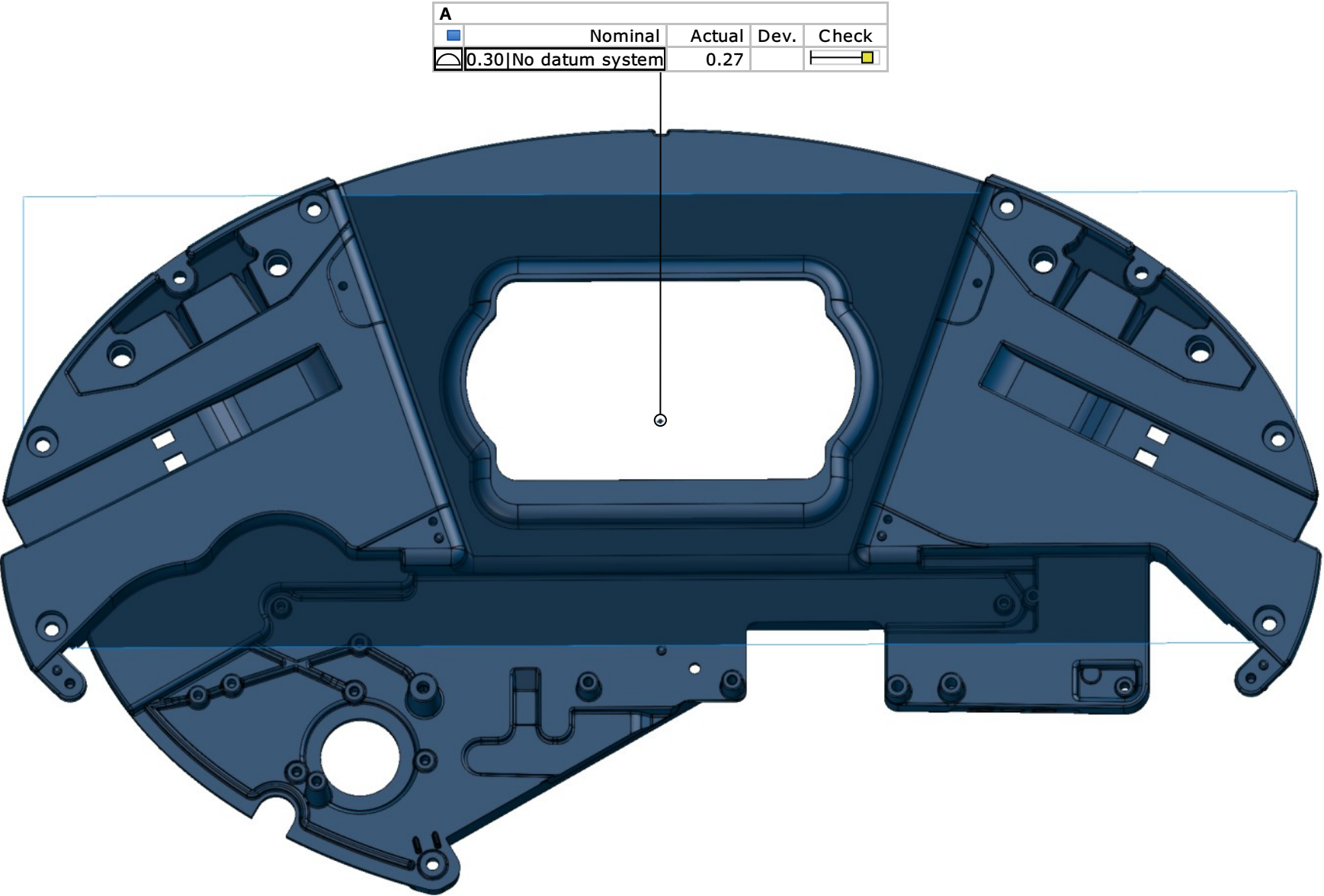
Surface defect classification at edge	
	Amount
Accepted	12
Satisfactory	3
Warning	5
Failed	2
Total	22

Surface defect classification at edge	
	Amount
Accepted	12
Satisfactory	3
Warning	5
Failed	2
Total	22



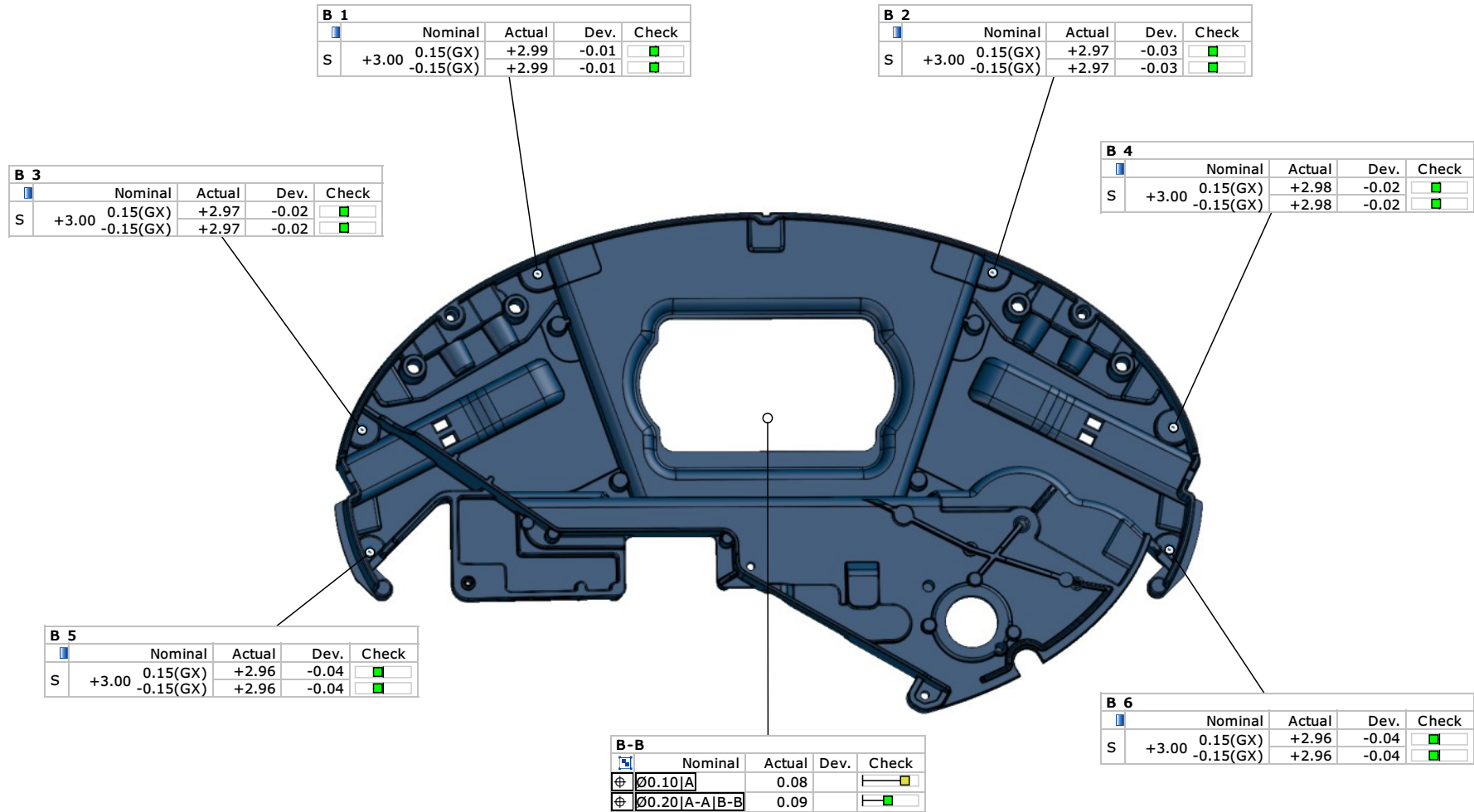
Verification of mounting condition: Primary datum A

Alignment: Alignment by coordinate systems -



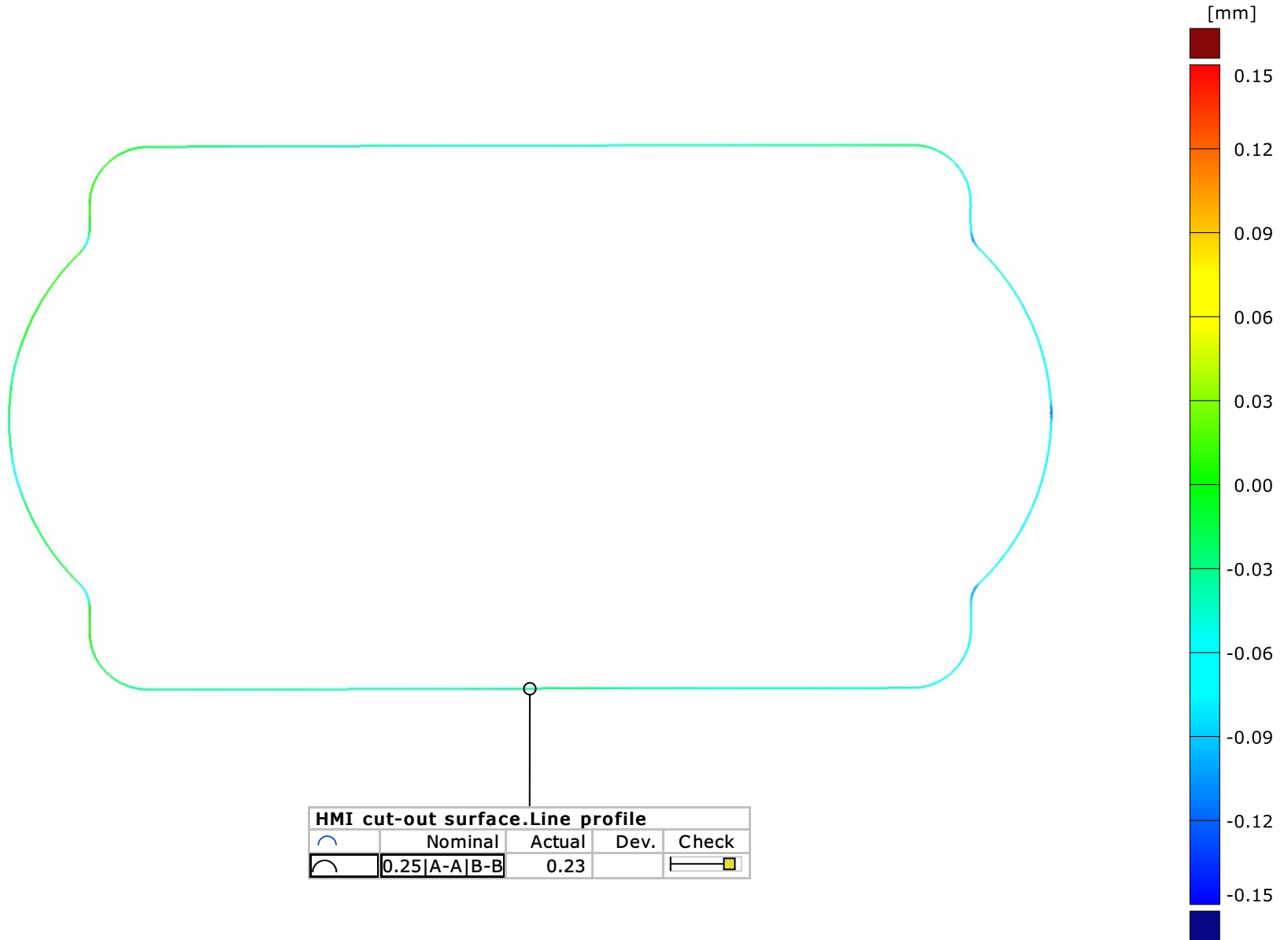
Verification of mounting condition: Secondary datum B-

Alignment: Alignment by coordinate systems -



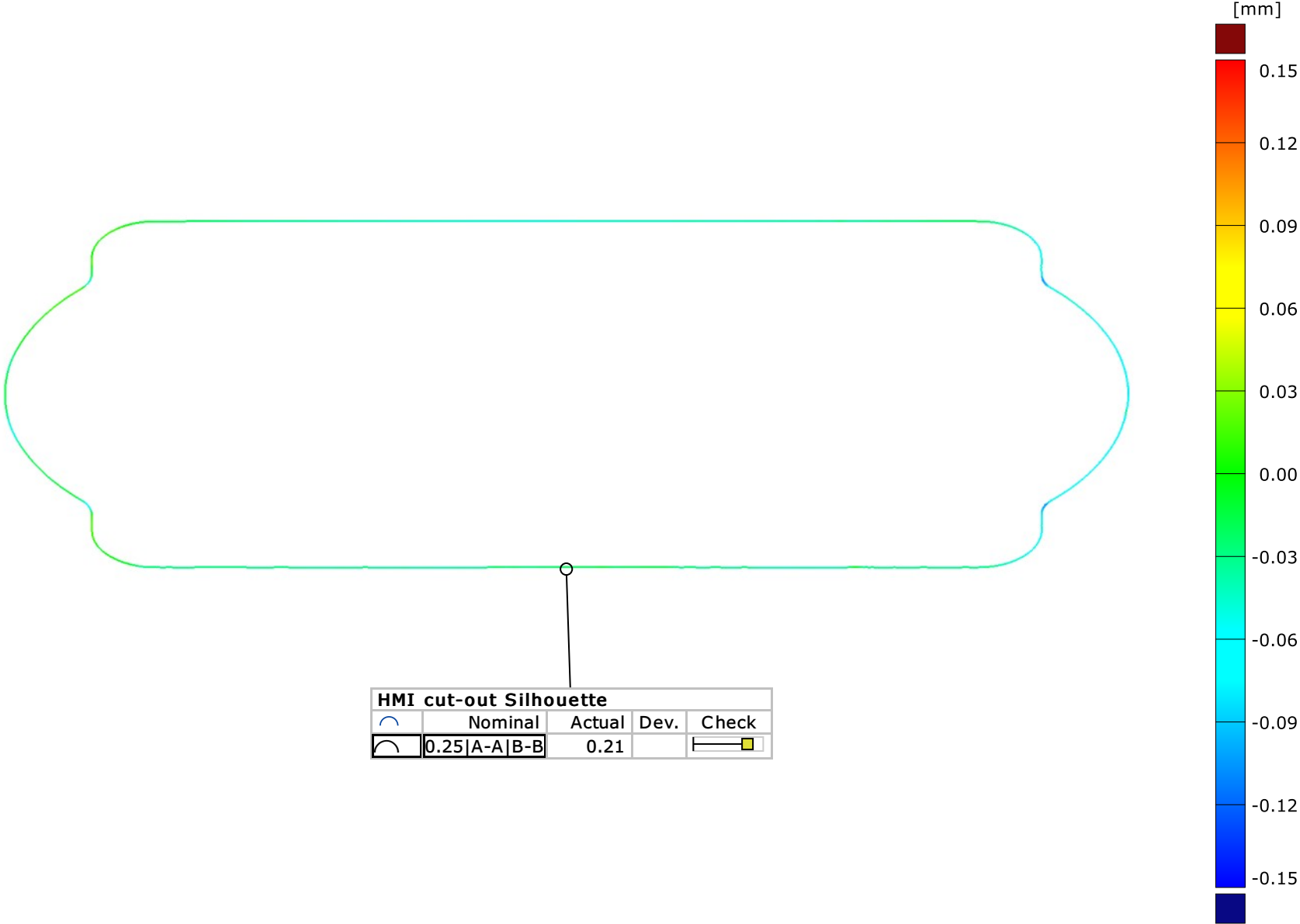
Check of HMI cut-out to specification

Alignment: Alignment by coordinate systems -










Check if HMI fits through the cut-out using the Silhouette

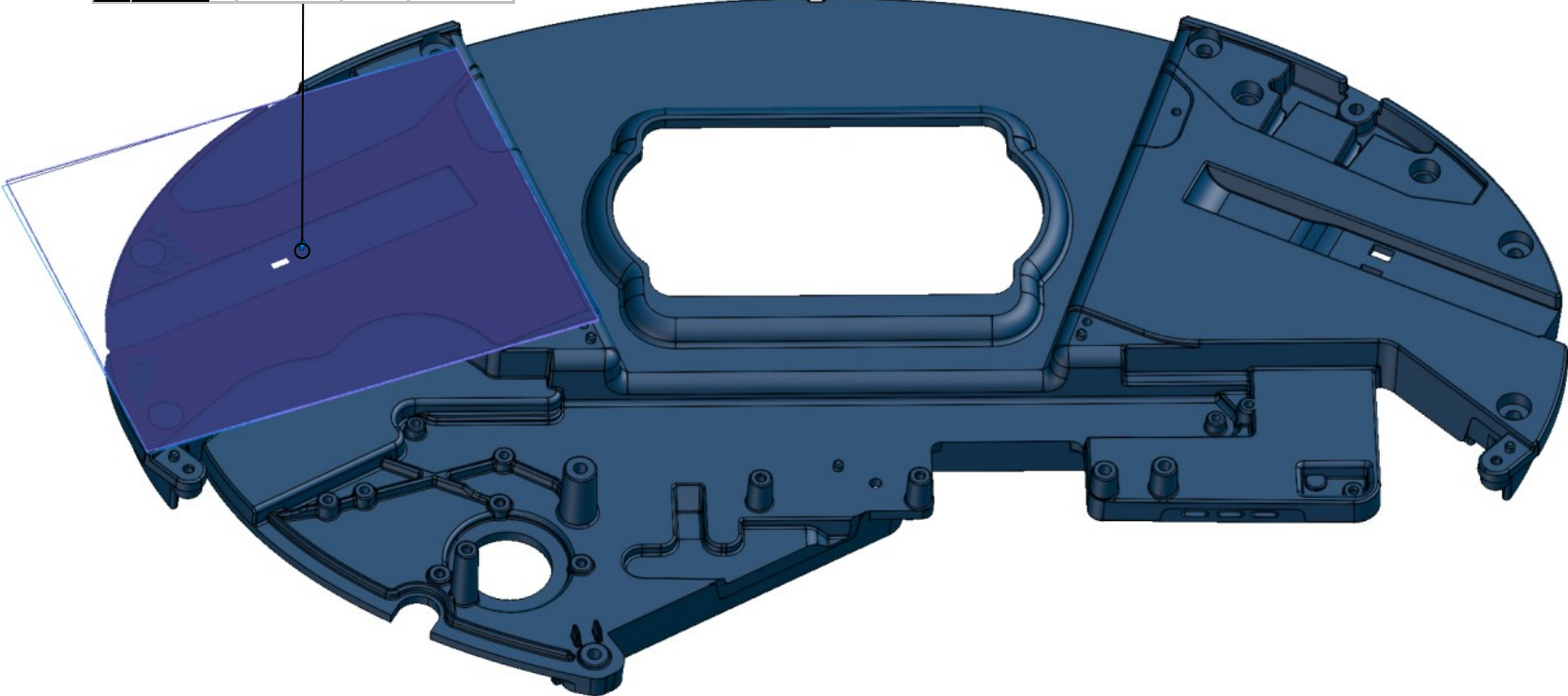
Alignment: Alignment by coordinate systems -



Check of datum KA

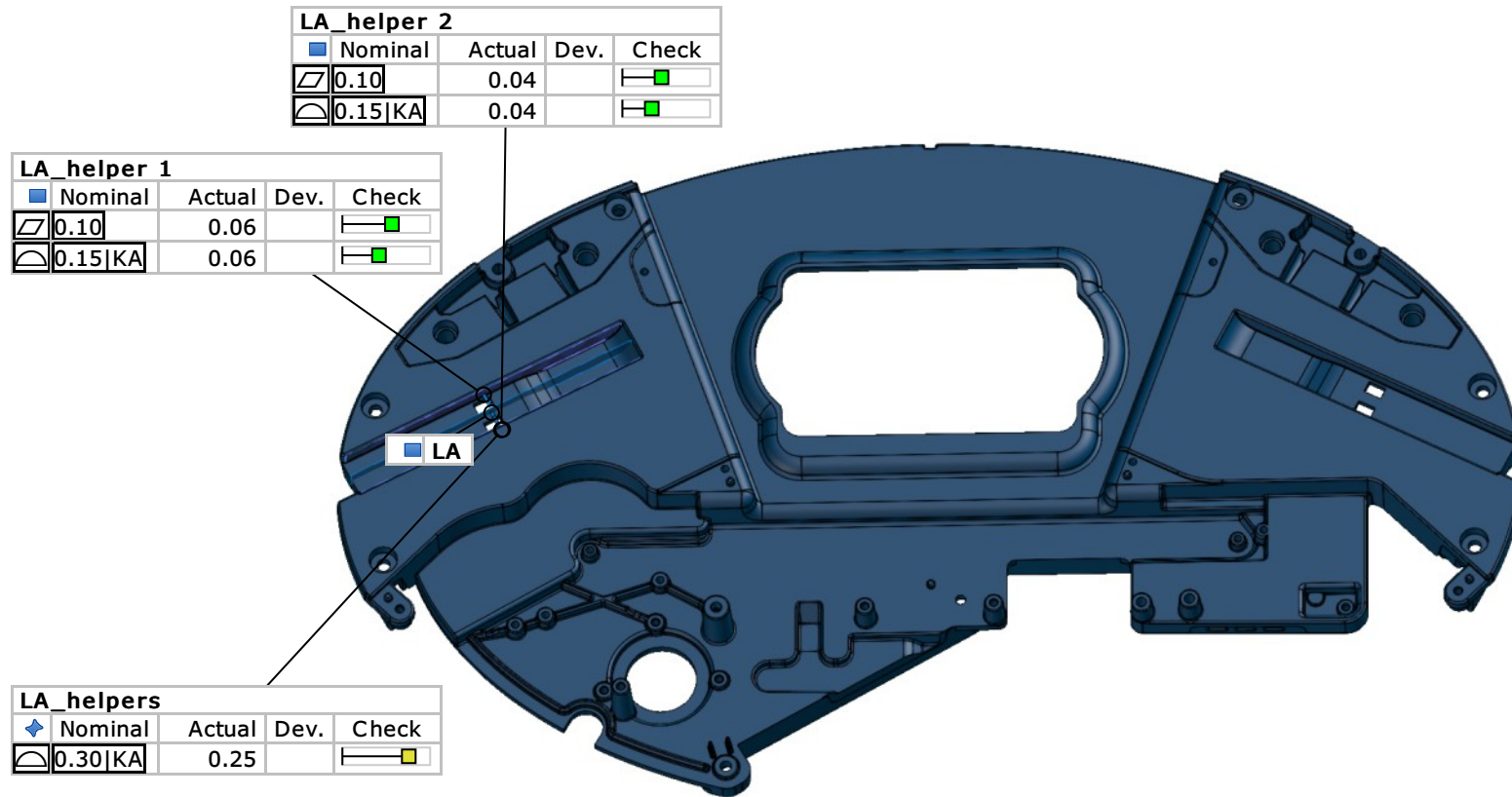
Alignment: Alignment by coordinate systems -

KA			
 Nominal	Actual	Dev.	Check
 0.35	0.30		
 0.40 A	0.30		
 0.50 A	0.33		



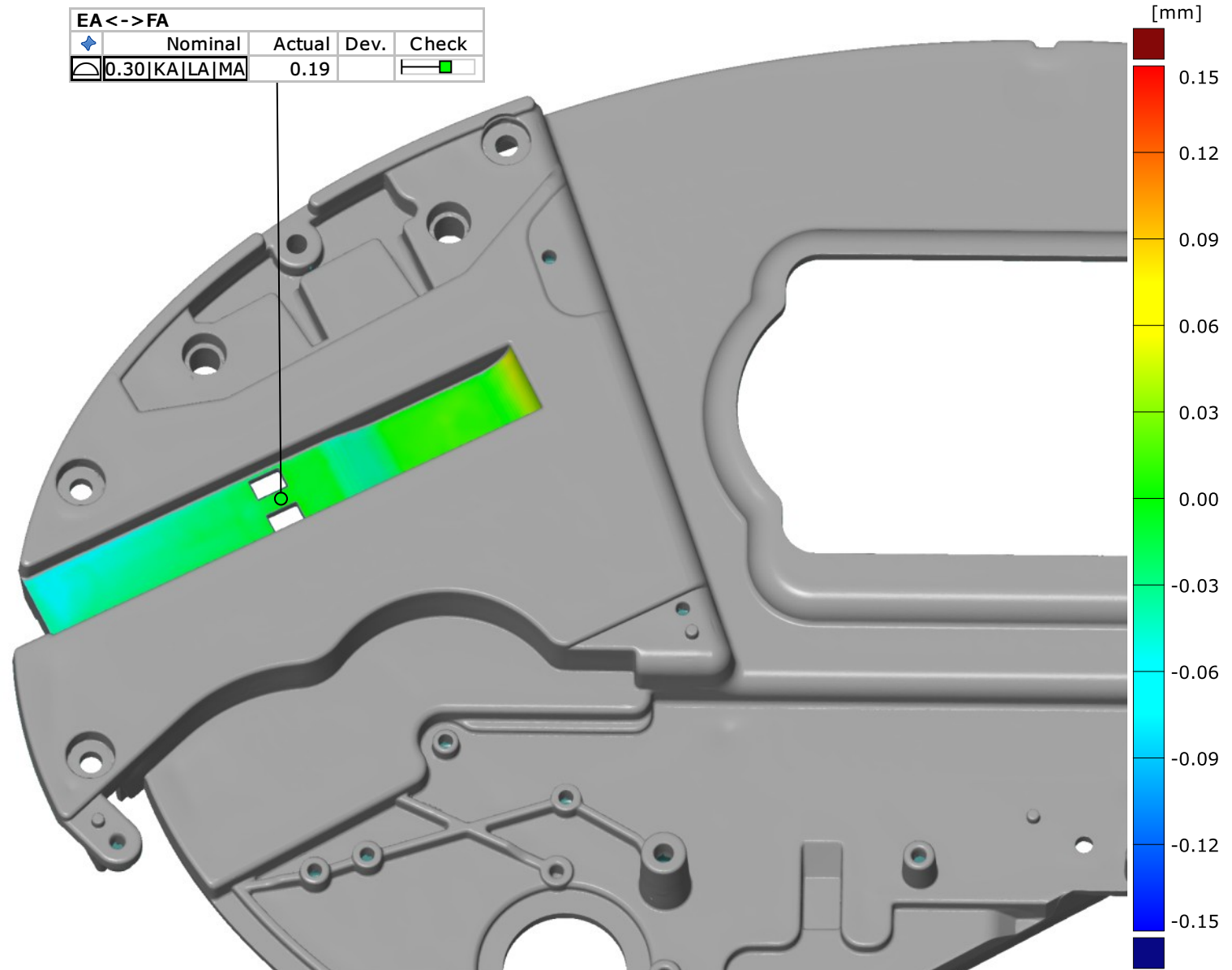
Check of guiding edge left (LA)

Alignment: Alignment by coordinate systems -



Check of surface EA <-> FA

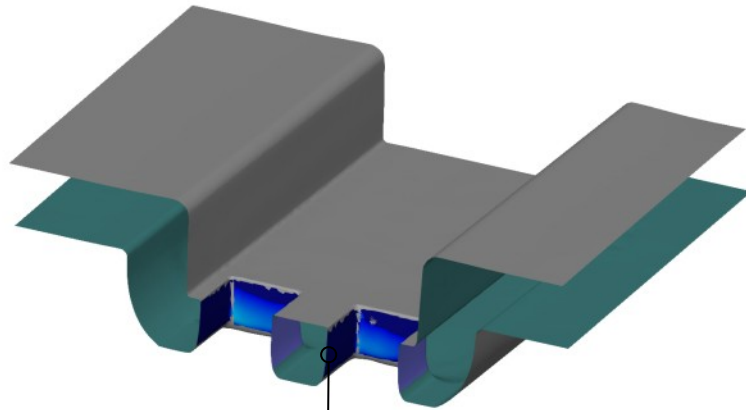
Alignment: Alignment by coordinate systems -



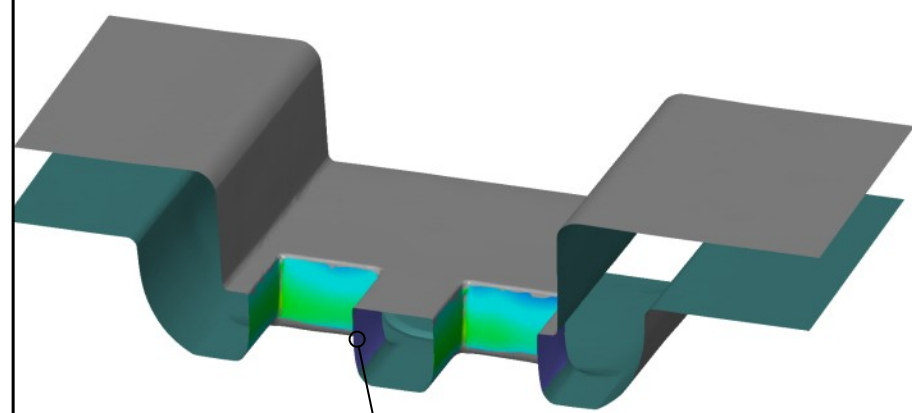
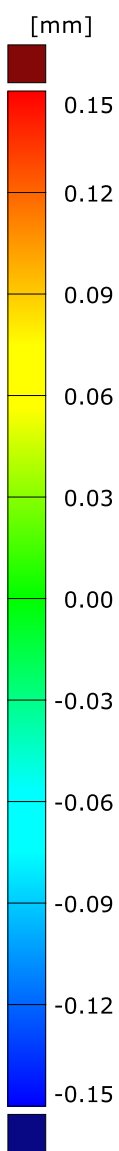
Check of holes_A

Alignment: Alignment by coordinate systems - Mounting Condition MMP

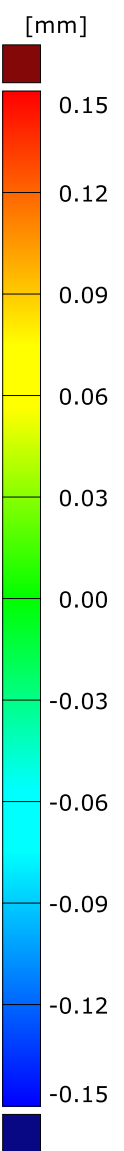
Alignment: Alignment by coordinate systems - Mounting Condition MMP



Holes_A.Surface profile				
Symbol	Nominal	Actual	Dev.	Check
⌒	0.30 KA LA MA	0.53		☐

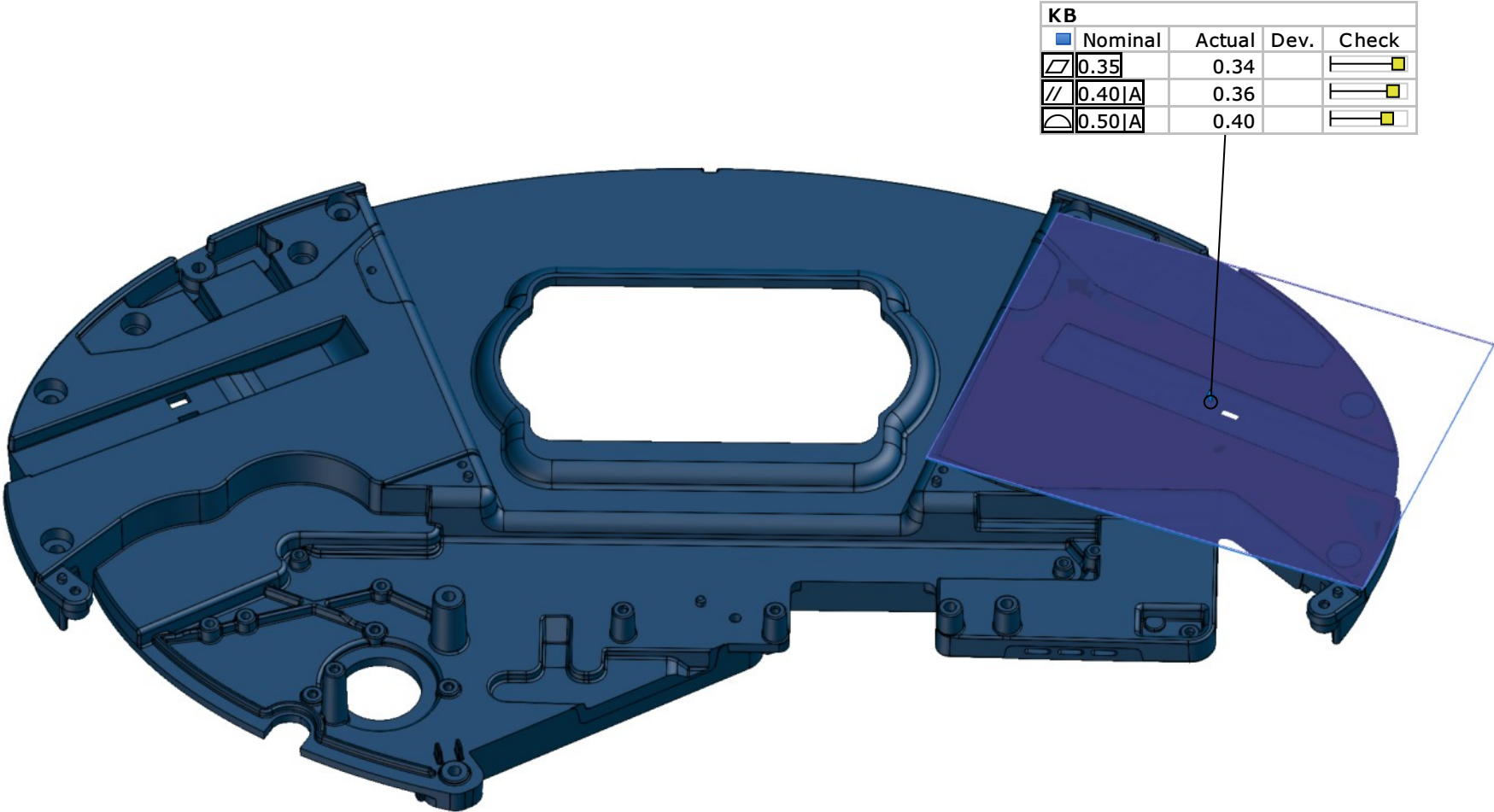


Holes_A.Surface profile				
Symbol	Nominal	Actual	Dev.	Check
⌒	0.30 KA LA MA	0.53		☐



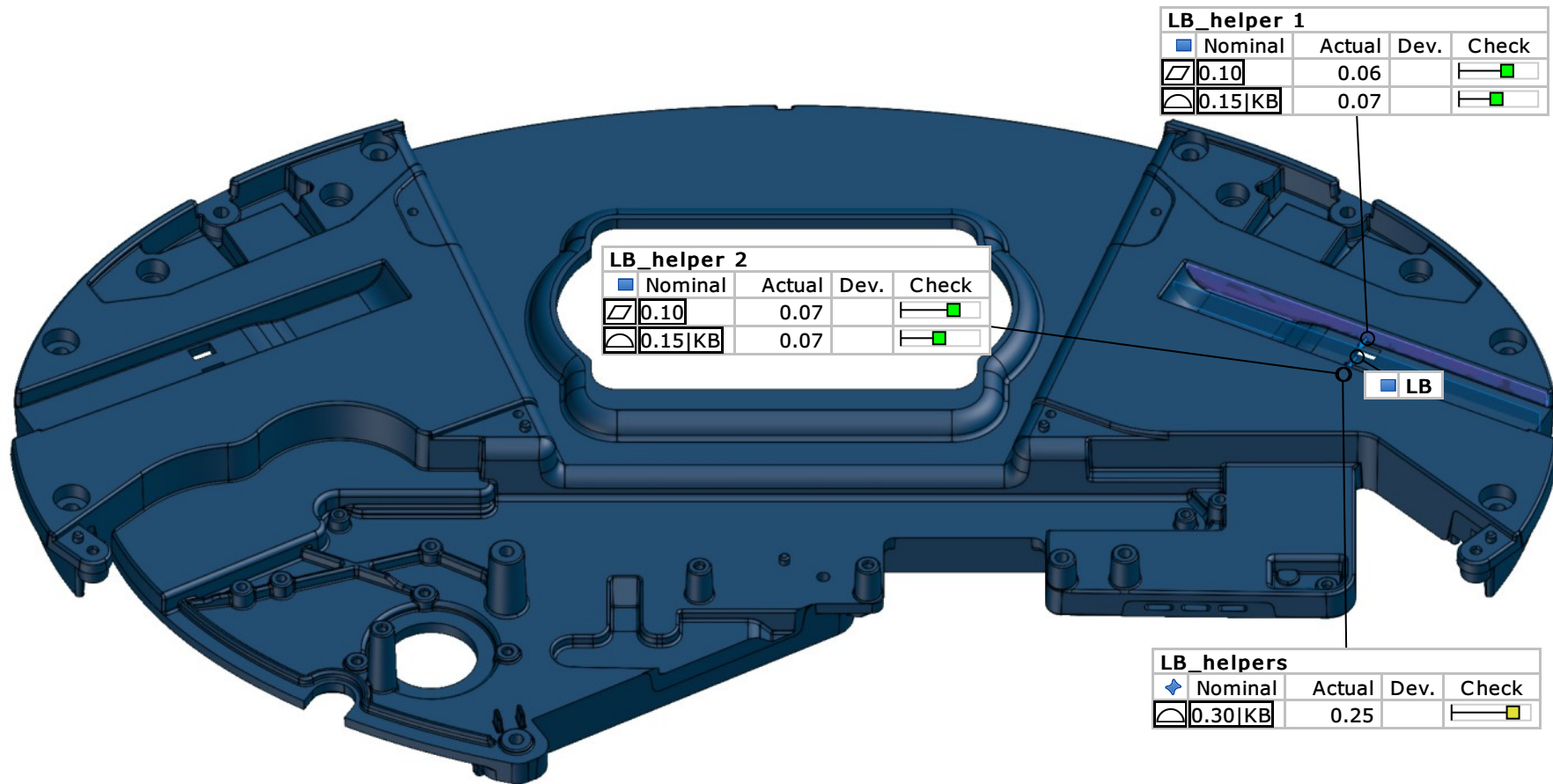
Check of datum KB

Alignment: Alignment by coordinate systems -



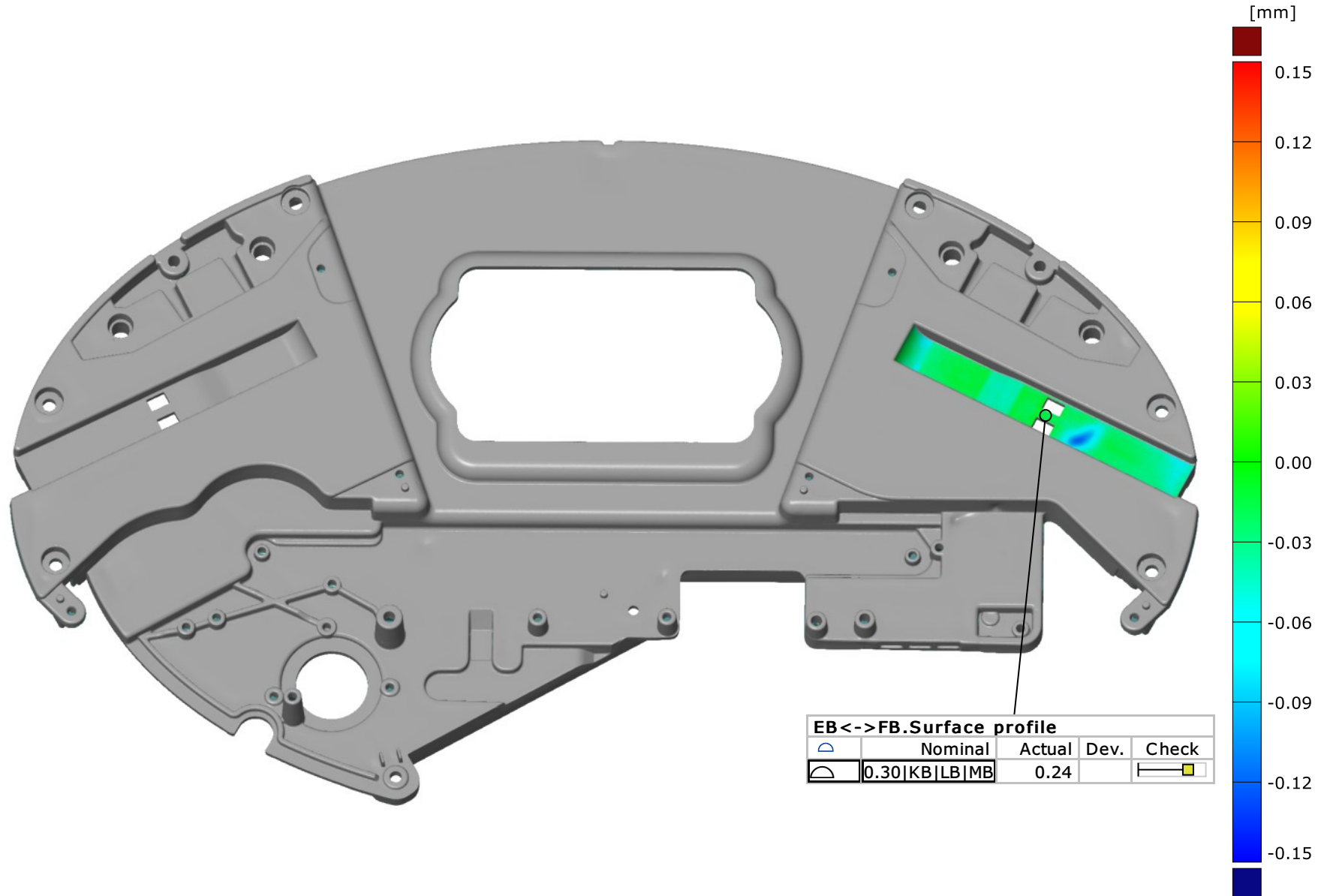
Check of datum LB

Alignment: Alignment by coordinate systems -



Check of surface EB<->FB

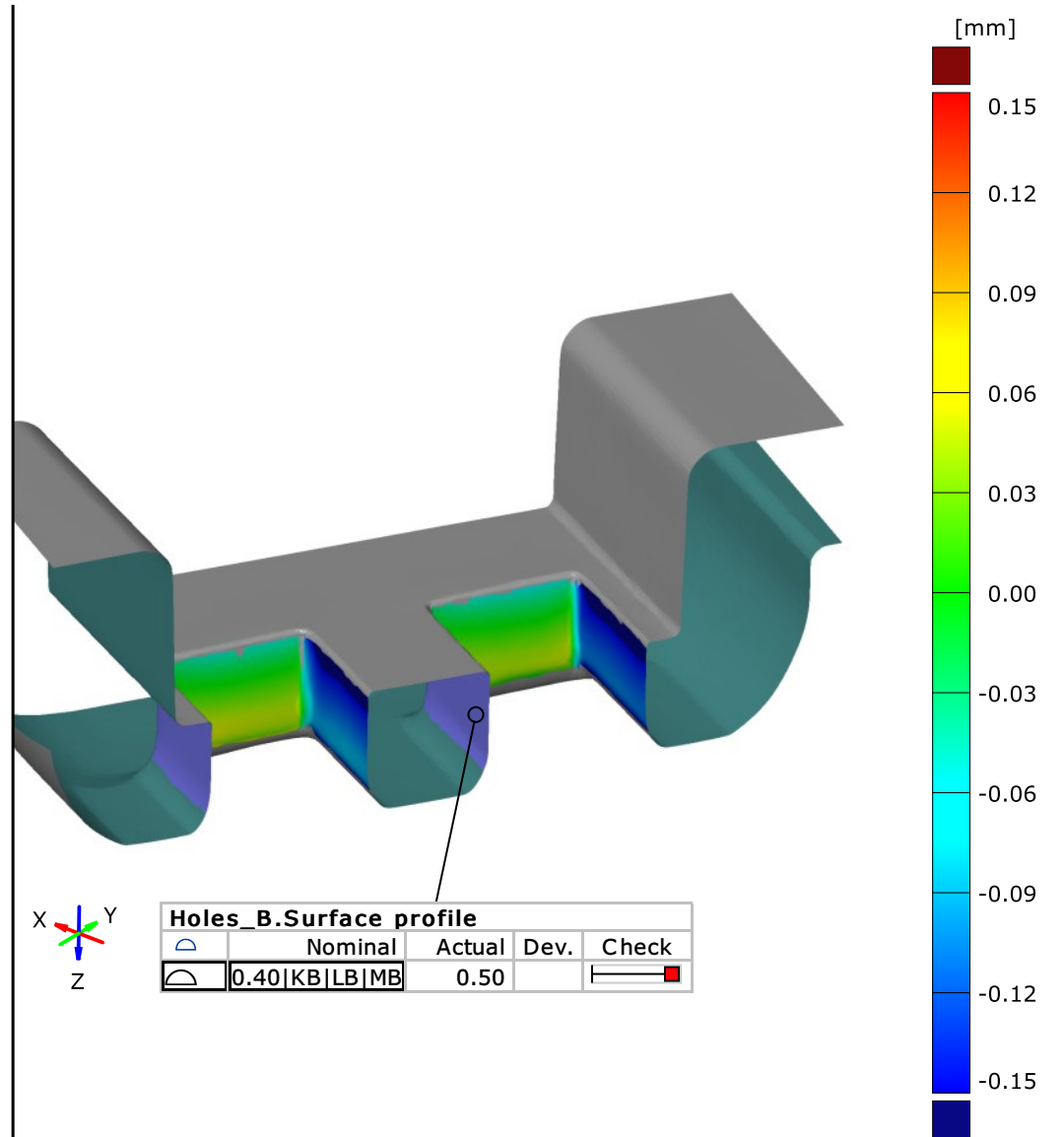
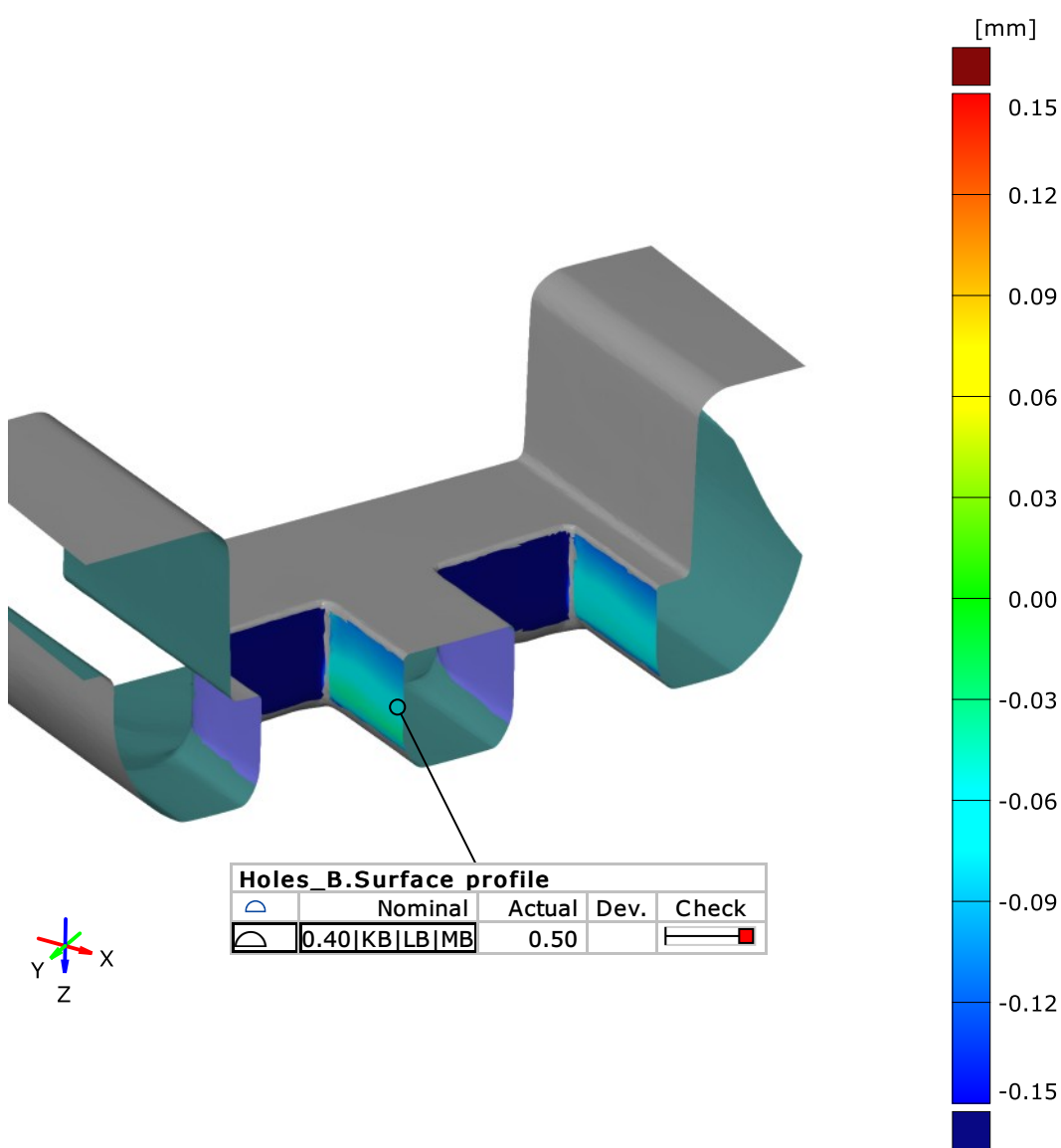
Alignment: Alignment by coordinate systems -



Check of holes B


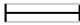
Alignment: Alignment by coordinate systems - Mounting Condition MMP


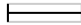
Alignment: Alignment by coordinate systems - Mounting Condition MMP

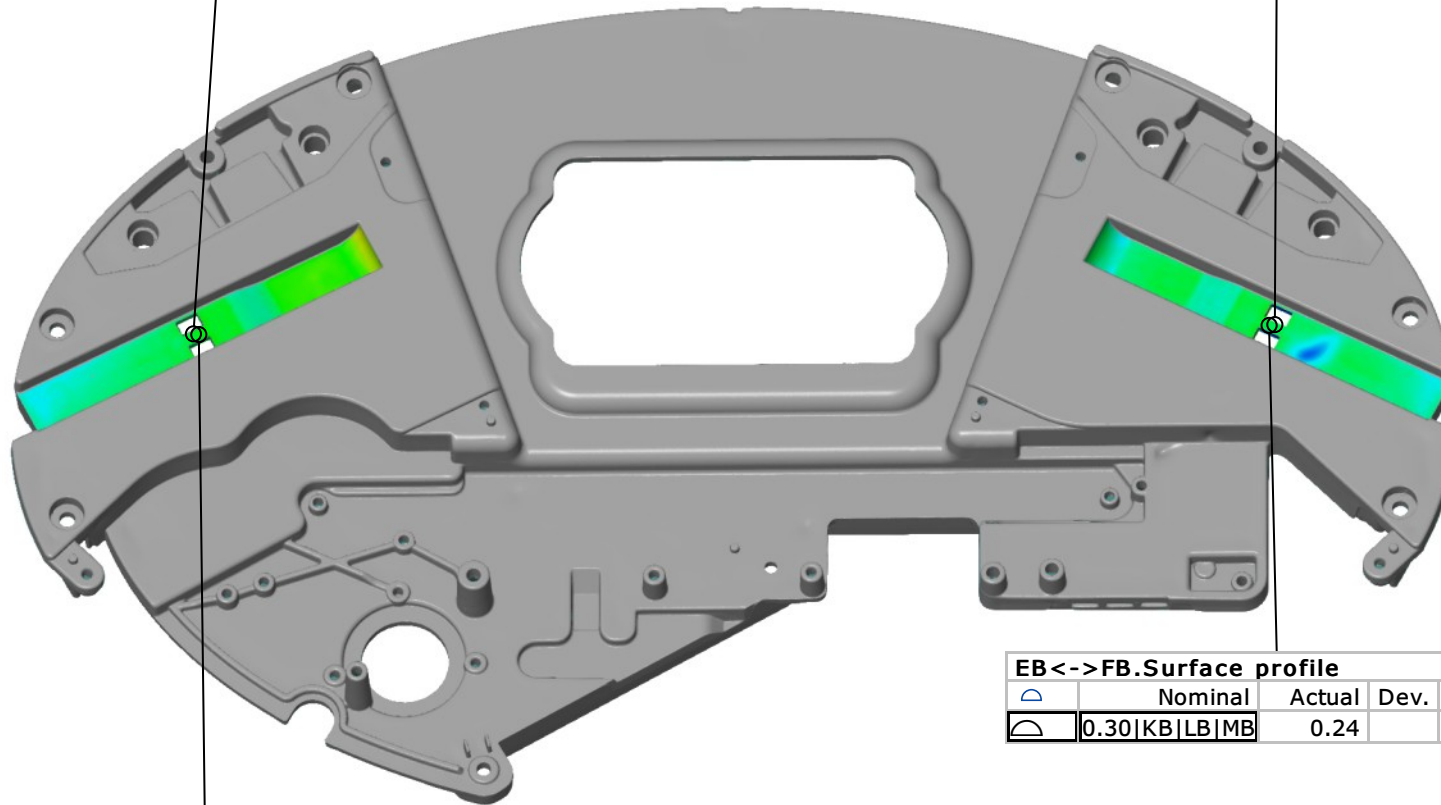



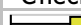
Check of holes and surface E <-> F



Alignment: Alignment by coordinate systems -

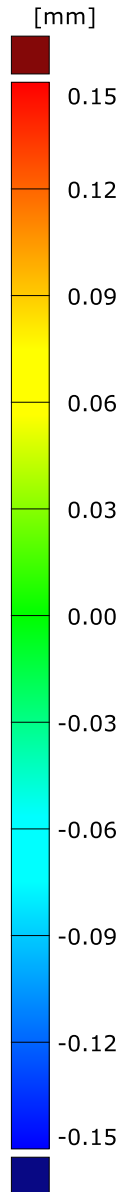
Holes_A.Surface profile				
	Nominal	Actual	Dev.	Check
	0.30 KA LA MA	0.53		

Holes_B.Surface profile				
	Nominal	Actual	Dev.	Check
	0.40 KB LB MB	0.50		



EB<->FB.Surface profile				
	Nominal	Actual	Dev.	Check
	0.30 KB LB MB	0.24		

EA<->FA				
	Nominal	Actual	Dev.	Check
	0.30 KA LA MA	0.19		



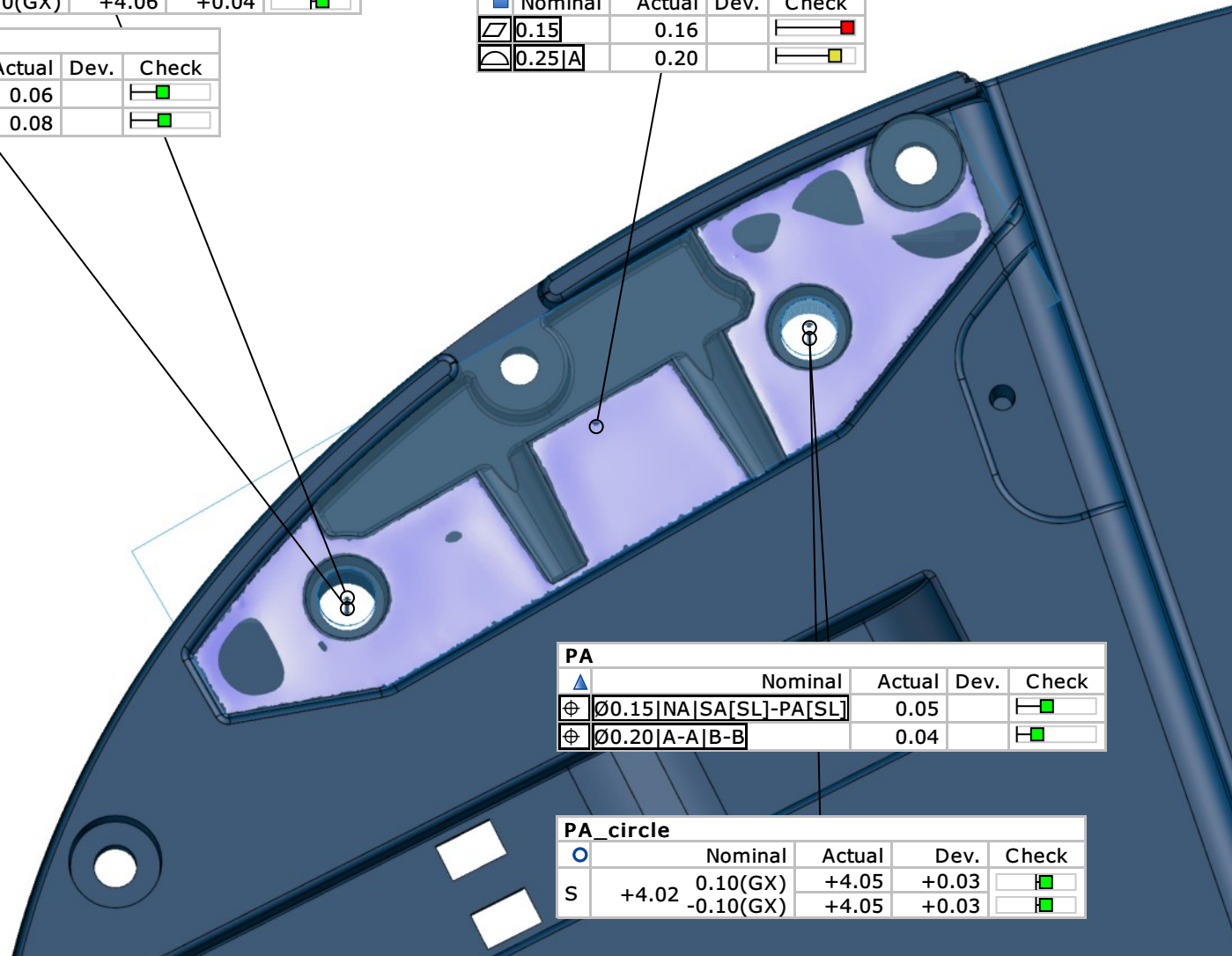
Check of the datum system NA|SA-PA

Alignment: Alignment by coordinate systems -

SA_circle					
	Nominal	Actual	Dev.	Check	
○					
S	+4.02	0.10(GX)	+4.06	+0.04	<input type="checkbox"/> <input checked="" type="checkbox"/>
		-0.10(GX)	+4.06	+0.04	<input type="checkbox"/> <input checked="" type="checkbox"/>

SA				
	Nominal	Actual	Dev.	Check
▲				
⊕	∅0.15 NA SA[SL]-PA[SL]	0.06		<input type="checkbox"/> <input checked="" type="checkbox"/>
⊕	∅0.20 A-A B-B	0.08		<input type="checkbox"/> <input checked="" type="checkbox"/>

NA				
	Nominal	Actual	Dev.	Check
▱	0.15	0.16		<input type="checkbox"/> <input checked="" type="checkbox"/>
⌒	0.25 A	0.20		<input type="checkbox"/> <input checked="" type="checkbox"/>



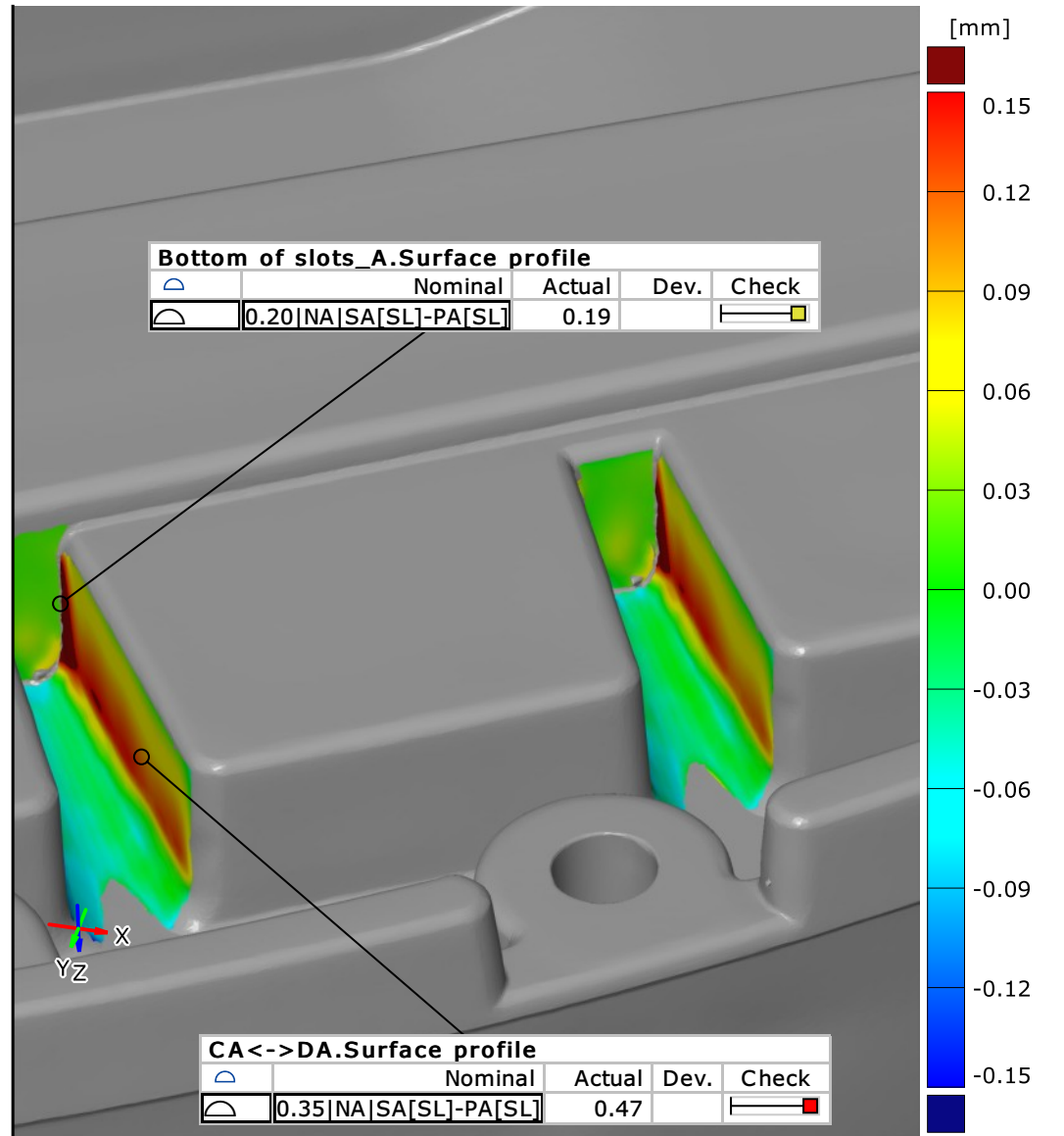
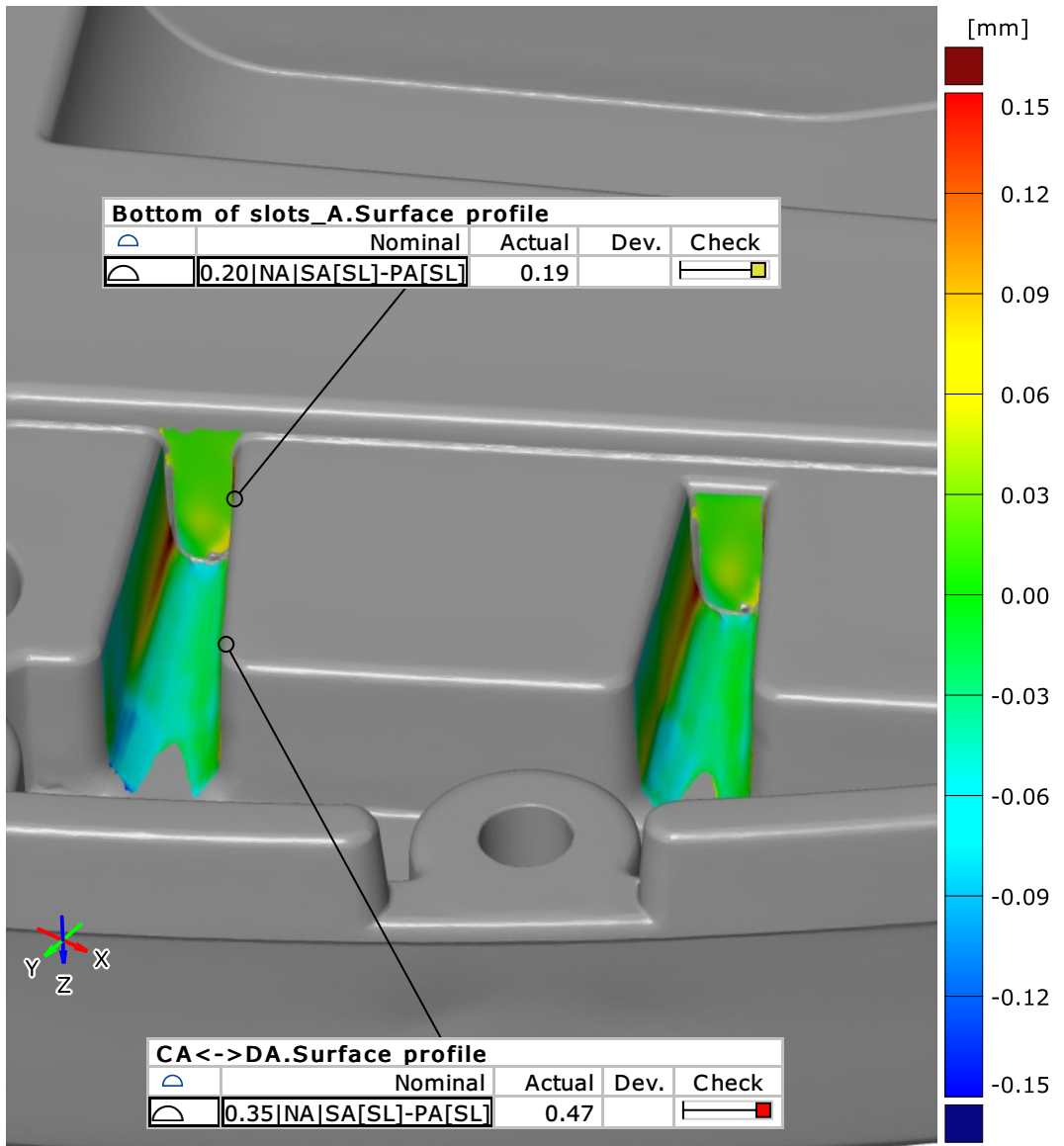
PA				
	Nominal	Actual	Dev.	Check
▲				
⊕	∅0.15 NA SA[SL]-PA[SL]	0.05		<input type="checkbox"/> <input checked="" type="checkbox"/>
⊕	∅0.20 A-A B-B	0.04		<input type="checkbox"/> <input checked="" type="checkbox"/>

PA_circle					
	Nominal	Actual	Dev.	Check	
○					
S	+4.02	0.10(GX)	+4.05	+0.03	<input type="checkbox"/> <input checked="" type="checkbox"/>
		-0.10(GX)	+4.05	+0.03	<input type="checkbox"/> <input checked="" type="checkbox"/>

Check of sensor slots (left)

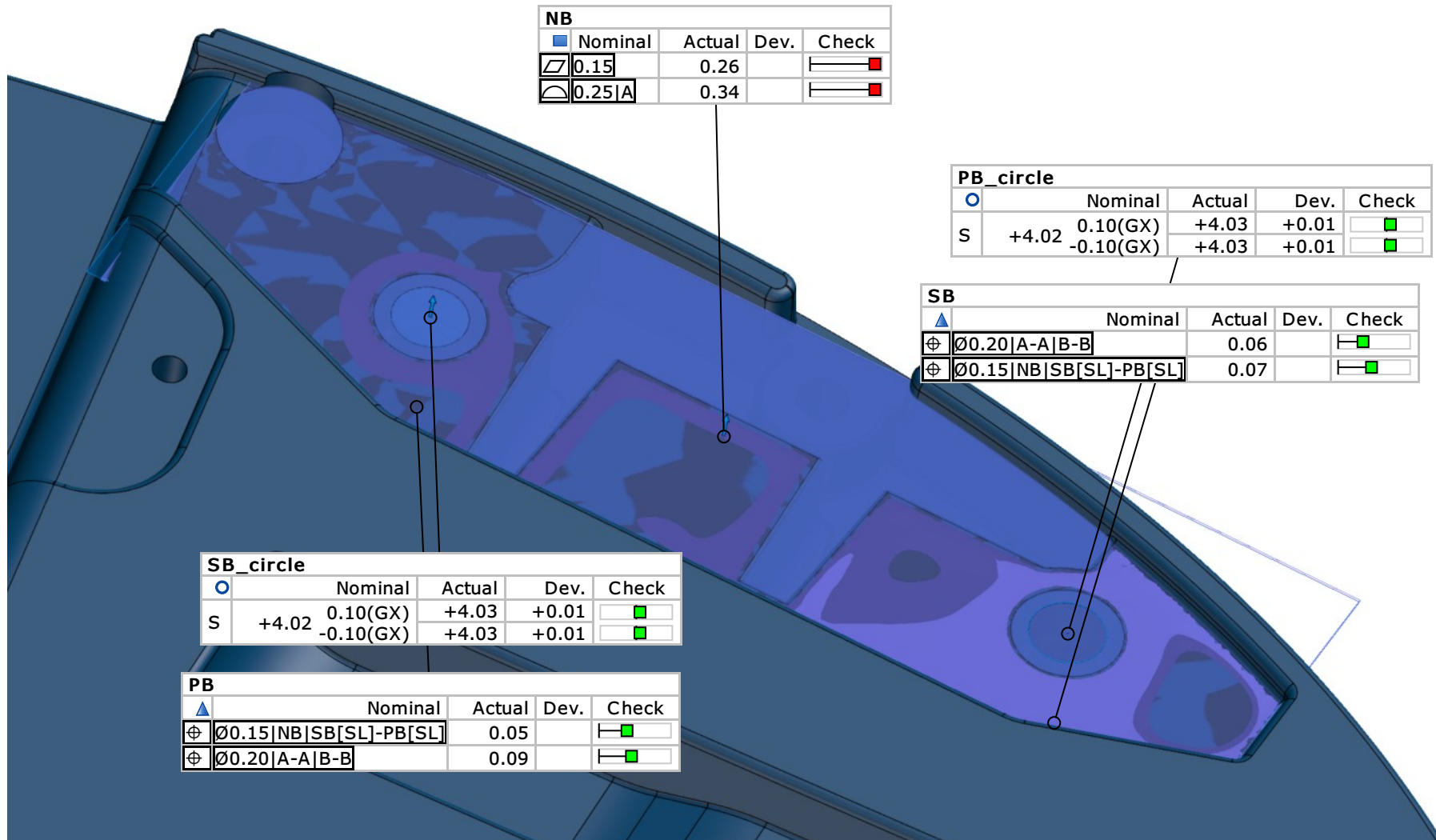
Alignment: Alignment by coordinate systems - Mounting Condition MMP

Alignment: Alignment by coordinate systems - Mounting Condition MMP



Check of datum system NB|SB-PB

Alignment: Alignment by coordinate systems -



Check of bottom of sensor slots_B

Alignment: Alignment by coordinate systems - Mounting Condition MMP

Alignment: Alignment by coordinate systems - Mounting Condition MMP

